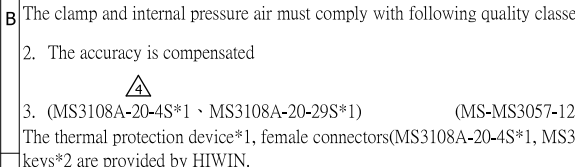


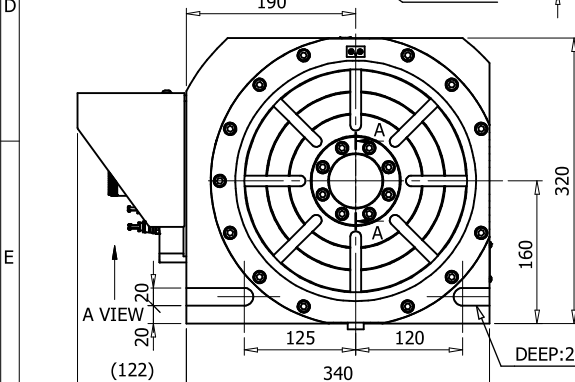
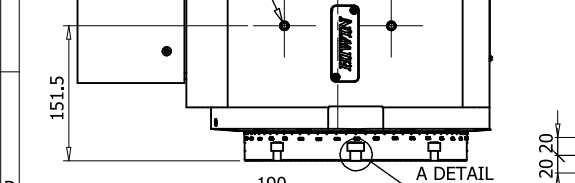
Clamp Circuit		Circuit Specification-B			RT Specification	
No.	Item	Spec.	Note	Item	Spec.	
C-E1	Power connector	MS3100A-20-4P	-	Table Diameter(mm)	250	
C-E2	Temperature sensor connector	MS3100A-20-29P	-	Center Height(mm)	160	
C-E3	Encoder Signal connector	MS3100A-20-29P	-	T-slot Width(mm)	12H8	
C-H1	Water Cooling(In)	ø8	$q \geq 3.7\text{ l/min}; \Delta \theta = 5\text{K}; p \leq 1\text{ bar}$	Bearing I.D.(mm)	100	
C-H2	Water Cooling(Out)	ø8	$q \geq 3.7\text{ l/min}; \Delta \theta = 5\text{K}; p \leq 1\text{ bar}$	Torque Motor Type	TMRW47	
C-H3	Clamp Air	ø8	$p = 6.3 \pm 0.2 \text{ bar}$ (note 1)	Max. Speed with water cooling(rpm)	140	
C-H4	Internal Pressure Air	ø8	$p \leq 0.1 \text{ bar}$ (note 1)	Continuous Torque with water cooling(Nm)	148	



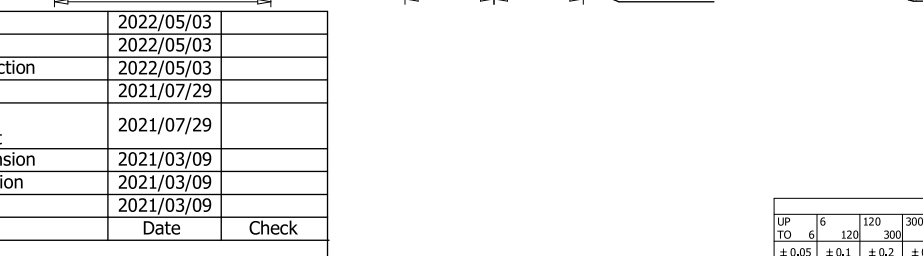
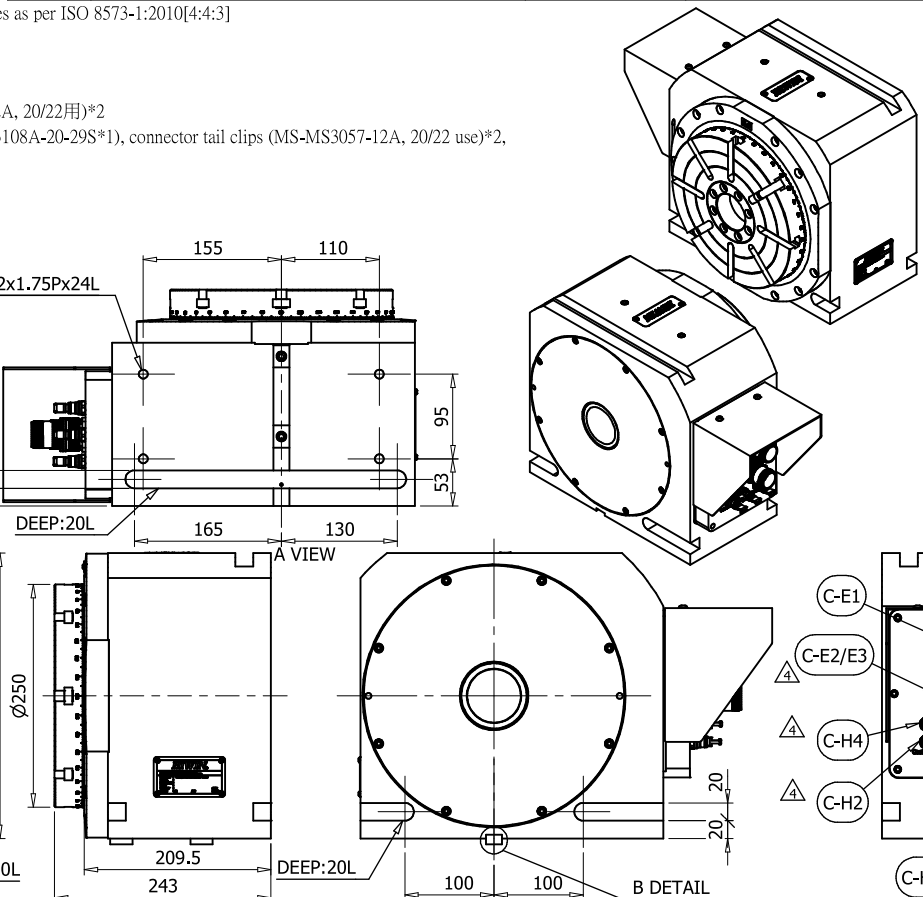
Note:

- ISO 8573-1:2010[4:4:3]
- The clamp and internal pressure air must comply with following quality classes as per ISO 8573-1:2010[4:4:3]
- The accuracy is compensated

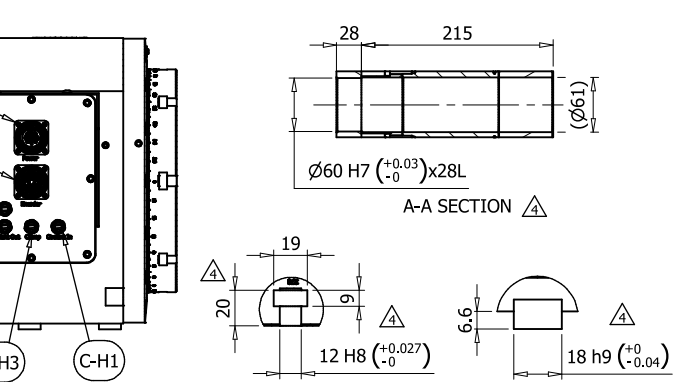
3. (MS3108A-20-4S*1, MS3108A-20-29S*1) (MS-MS3057-12A, 20/22用)*2
 The thermal protection device*1, female connectors(MS3108A-20-4S*1, MS3108A-20-29S*1), connector tail clips (MS-MS3057-12A, 20/22 use)*2, keys*2 are provided by HIWIN.



Modification	Section	Description	Date	Check
△	Page1 E8	Add tolerance	2022/05/03	
△	Page1 B2	Modify note	2022/05/03	
△	Page1 B3/E5	Add internal pressure function	2022/05/03	
△	Page1 E8	Add section view	2021/07/29	
△	Page1 E5	Modify the direction of coolant inlet and outlet	2021/07/29	
△	Page1 E7	Ø12H8 → 12H8/Modify dimension	2021/03/09	
△	Page1 E7	21 → 20mm/Modify dimension	2021/03/09	
△	Page1 E5	Modify connector mark	2021/03/09	

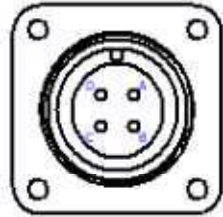


Peak Torque with water cooling.(Nm)	280
Continuous Current with water cooling(A)	9
Peak Current with water cooling.(A)	24.3
Continue Power(W)	2169
Encoder Interface	Renishaw RA23F
Accuracy(arc-sec)	±5 (note2)
Repeatability(arc-sec)	4
Clamping Type	Pneumatic
Clamping Torque(Nm)	600
Net Weight(kg)	~150
Load Weight(kg)	160
Controller Support	FANUC



mm		AS00555D	
UP	TO	1	2
6	120	AS00555D	AS00555D
120	300		
300	600		
600	1200		
1200	2400		
OVER	2400		
±0.05	±0.1	±0.2	±0.3
		±0.4	±0.5
		±0.6	±0.8

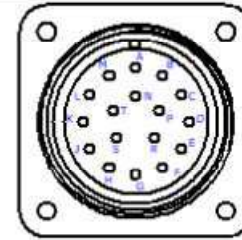
C-E1 for Rotary Axis TM Power Connector



MS3100A-20-4P
23A, 4P(2.5mm²), Male

PIN	Wire Markers	Color/Description
A	U	Black
B	V	Black
C	W	Black
D	PE	Yellow/Green

C-E2/E3 for Rotary Axis TM Temperature and Encoder Connector

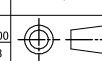


MS3100A-20-29P
17P, 0.75mm², Male

PIN	Wire Markers	Color/Description
A	PTC+	Blue
B	PTC-	Yellow
C	TEMP-	Brown
D	TEMP+(U)	White
E	TEMP+(V)	Gray
F	TEMP+(W)	Pink
G	SD	Gray
H	SD*	Pink
J	REQ	Violet
K	REQ*	Yellow
L	5V	Brown
M	Spare	Spare
N	0V	White
P	0V	Green
R	Shield	Shield

1	Rotary Table	
*	AS00555D	
AS00555D	RCV-250	2022/5/3

	mm						
UP	6	120	300	600	1200	2400	OVER
TO	6	120	300	600	1200	2400	2400
	±0.05	±0.1	±0.2	±0.3	±0.4	±0.5	±0.8



HIWIN TECHNOLOGIES

D3
2 / 2