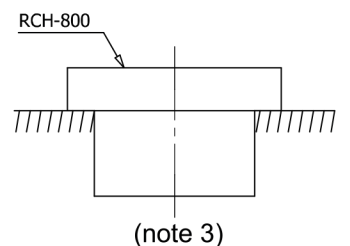
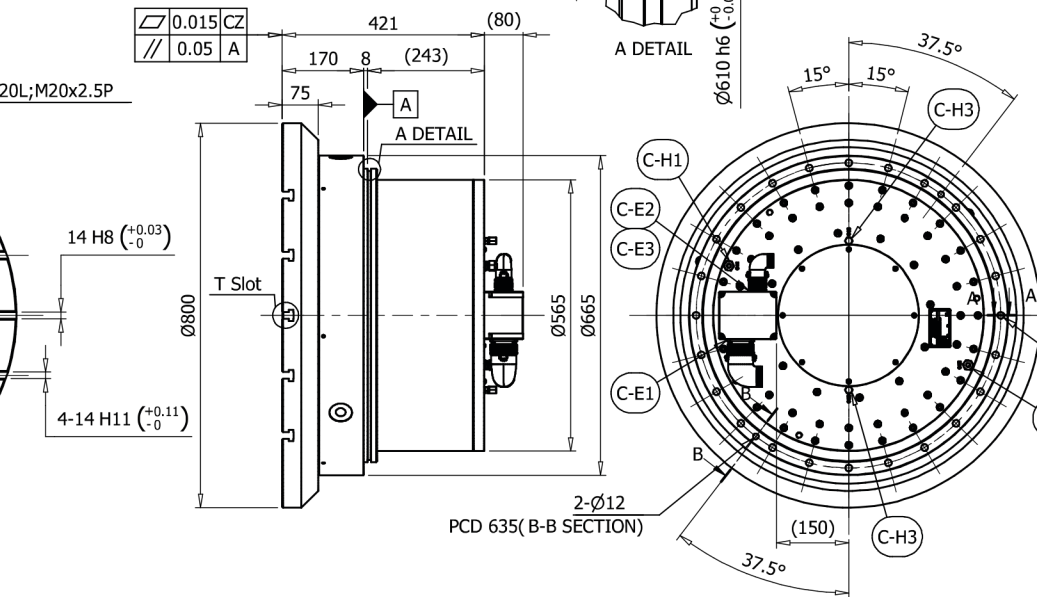
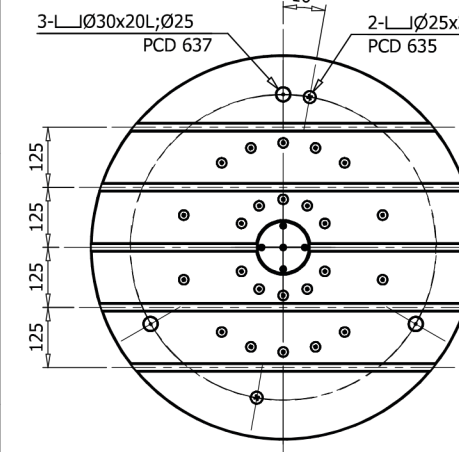
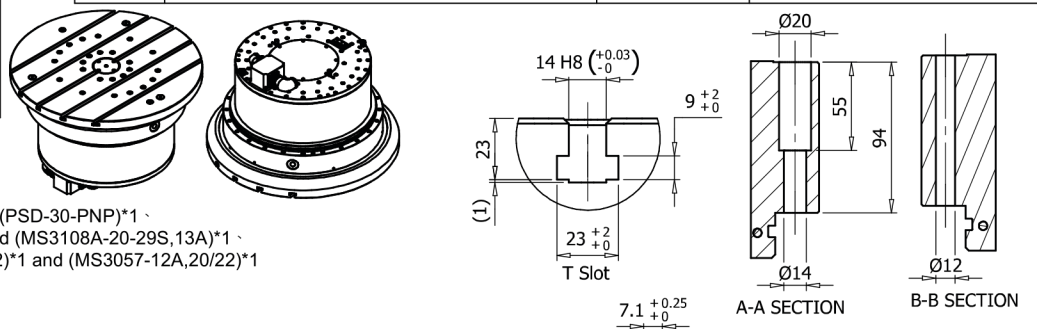


Circuit Specifications-B			
No.	Item	Spec.	Note
C-E1	Power connector	MS3100A-32-17P	-
C-E2	Temperature sensor connector	MS3100A20-29P	-
C-E3	Encoder Signal connector	MS3100A20-29P	-
C-H1	Water Cooling(In)	ø12	$\Delta p \leq 1 \text{ bar}; q \geq 28.6 \text{ l/min}; \Delta \theta \leq 5\text{K}$
C-H2	Water Cooling(Out)	ø12	$\Delta p \leq 1 \text{ bar}; q \geq 28.6 \text{ l/min}; \Delta \theta \leq 5\text{K}$
C-H3	Clamp Oil	H1/4"	$p = 70 \sim 77 \text{ bar}$

RT Specifications	
Item	Spec.
Table Diameter(mm)	800
Table Height(mm)	170
T-slot Width(mm)	14H8/H11
Bearing I,D(mm)	395
Torque Motor Type	TMRWDFC
Continuous power with water cooling(W)	16755
Max. Speed with water cooling(rpm)	80
Continuous Torque with water cooling(Nm)	2000
Peak Torque with water cooling.(Nm)	3600
Continuous Current with water cooling(A)	60
Peak Current with water cooling.(A)	162
Encoder	Renishaw RA23N
Accuracy(arc-sec)	$\pm 5$ (note1)
Repeatability(arc-sec)	4
Clamping Type	Oil
Clamping Torque(Nm)	4200
Net Weight(kg)	~750
Load Weight(kg)	1800
Controller Support	MITSUBISHI

Note :

- The accuracy is compensated.
- The Thermal protection device\*1、Pressure sensor(PSD-30-PNP)\*1、Military female connector(MS3108A-32-17S,80A)\*1 and (MS3108A-20-29S,13A)\*1、Military female connector strain reliefs(MS3057-20A,32)\*1 and (MS3057-12A,20/22)\*1 are supplied by HIWIN.
- This rotary table is only for horizontal installation.



△	Page1 C1			
Modification	Section	Description	Date	Check
		Record		

		mm					
UP	TO	6	120	300	600	1200	OVER 2400
$\pm 0.05$	$\pm 0.1$	$\pm 0.2$	$\pm 0.3$	$\pm 0.4$	$\pm 0.5$	$\pm 0.8$	$\pm 1.0$

	1	Rotary Table	
	*	AS00615A	
	AS00615A	RCH-800	

HIWIN TECHNOLOGIES

A3

1/2