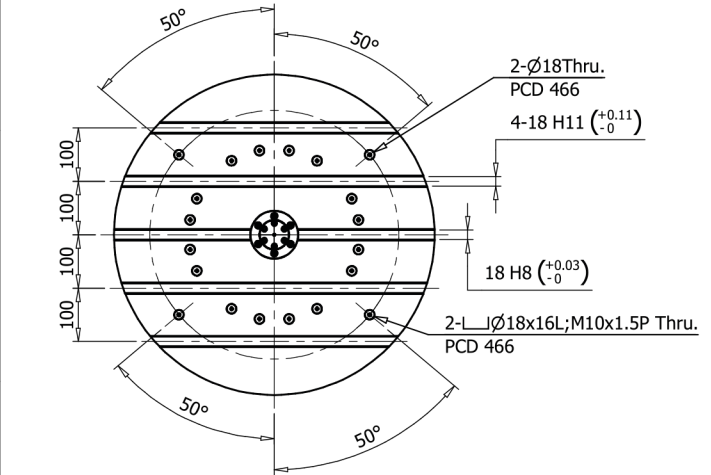
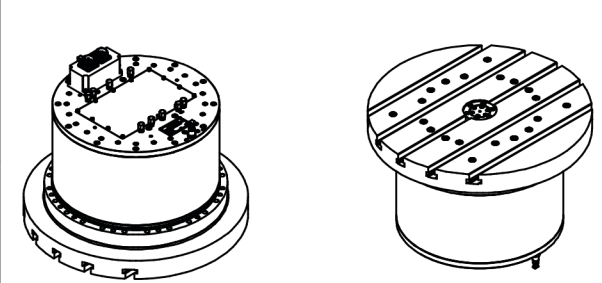
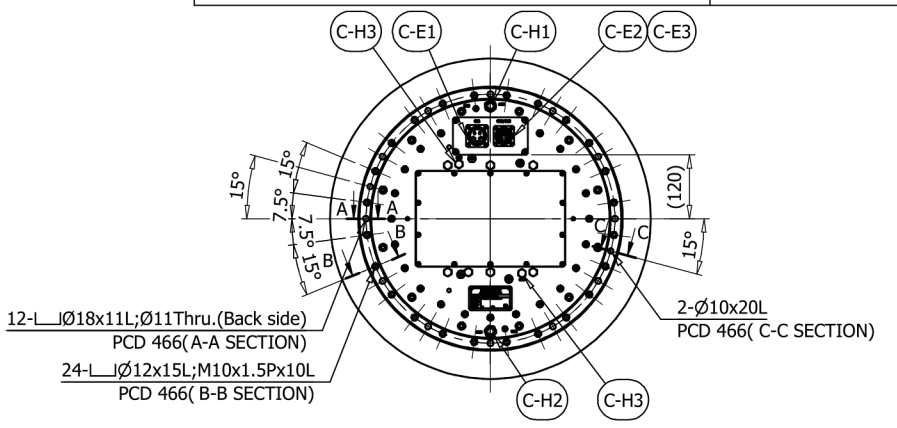
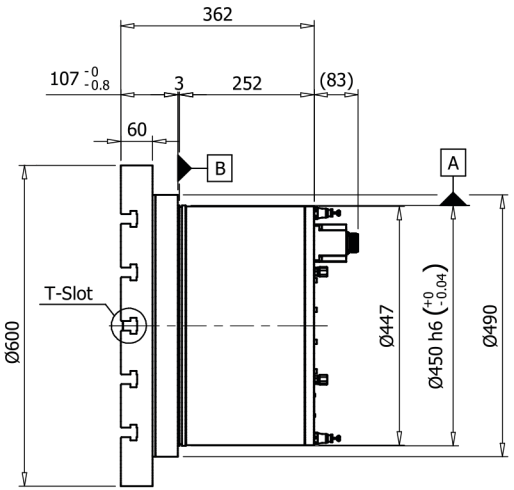
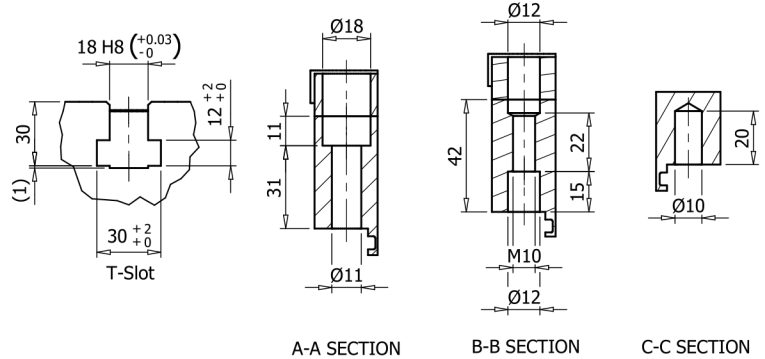


Note :  
 1. The accuracy is compensated.  
 2. The thermal protection device x1, is supplied by HIWIN.



Circuit Specifications-B			
No.	Item	Spec.	Note
C-E1	Power connector	MS3100A-22-22P	-
C-E2	Temperature sensor connector	MS3100A-20-29P	-
C-E3	Encoder Signal connector	MS3100A-20-29P	-
C-H1	Water Cooling(In)	Ø12	$p \leq 3 \text{ bar}; q \geq 22 \text{ l/min}; \Delta \theta \leq 5K$
C-H2	Water Cooling(Out)	Ø12	$p \leq 3 \text{ bar}; q \geq 22 \text{ l/min}; \Delta \theta \leq 5K$
C-H3	Clamp Oil	H1/4"	$p = 70 \text{ bar}$

RT Specifications	
Item	Spec.
Table Diameter(mm)	600
Table Height(mm)	107
T-slot Width(mm)	18H8/H11
Bearing I,D(mm)	260
Torque Motor Type	TMRWAF-C-SB
Max. Speed with water cooling(rpm)	100
Continuous Torque with water cooling(Nm)	1290
Peak Torque with water cooling.(Nm)	2400
Continuous Current with water cooling(A)	30
Peak Current with water cooling.(A)	81
Encoder	HEIDENHAIN ECA4412
Accuracy(arc-sec)	±5 (note1)
Repeatability(arc-sec)	4
Clamping Type	oil
Clamping Torque(Nm)	3200
Net Weight(kg)	~430
Load Weight(kg)	850
Controller Support	SIEMENS



Modification	Section	Description	Date	Check
* Record	* Record	* Record	* Record	* Record

mm						
UP TO	6	120	300	600	1200	OVER 2400
	±0.05	±0.1	±0.2	±0.3	±0.4	±0.5

1	Torque Motor Rotary Table
* AS00608B	AS00608B RCH-600

HIWIN TECHNOLOGIES