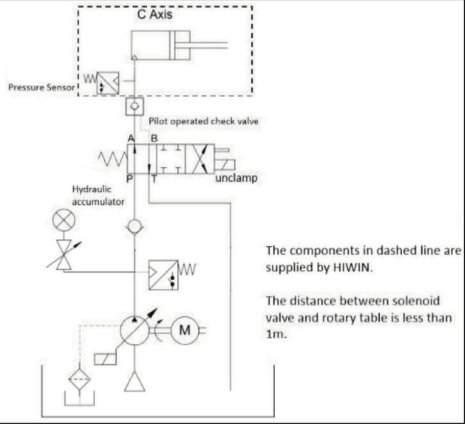
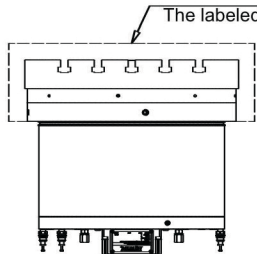
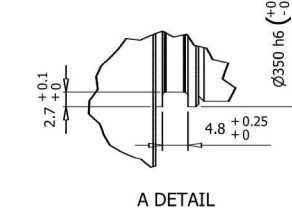
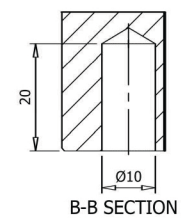
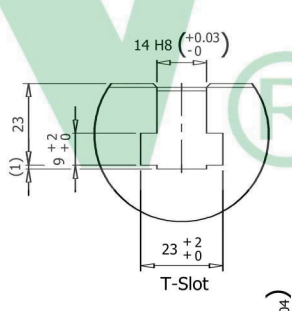
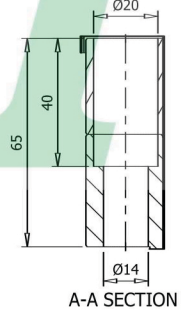
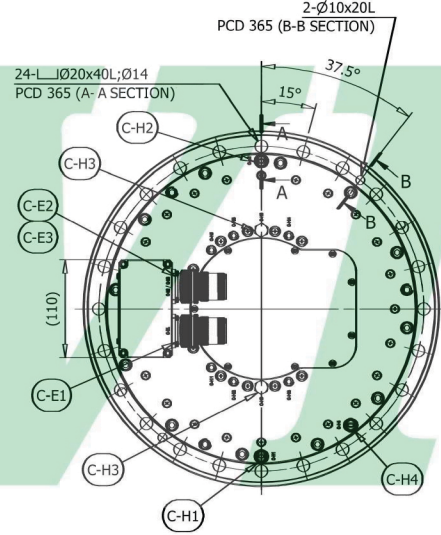
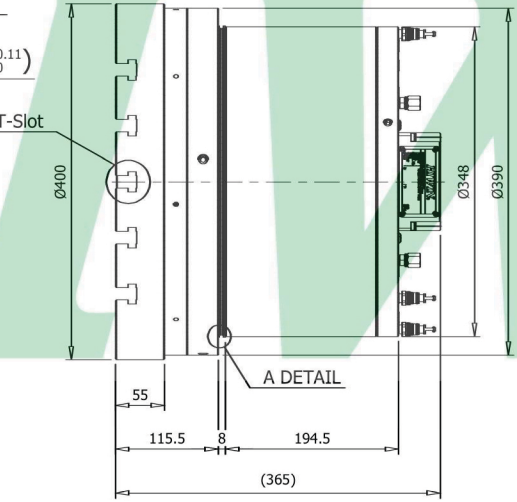
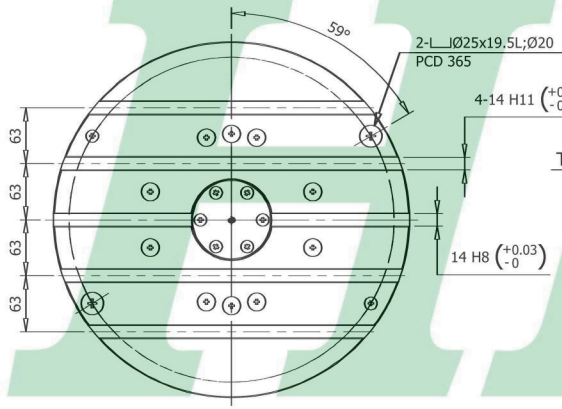
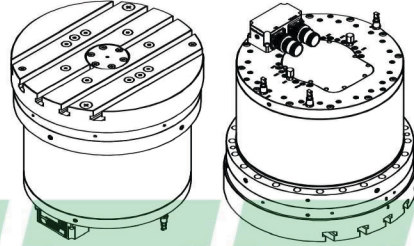


Clamp Circuit

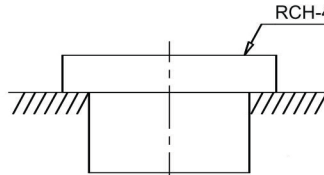


Interface Specification-B			
No.	Item	Spec.	Note
C-E1	Power Connection	MS3100A-20-4P	-
C-E2	Thermal Motor Protection	MS3100A-20-29P	-
C-E3	Encoder Signal	MS3100A-20-29P	-
C-H1	Coolant(In)	ø8	$\Delta \theta \leq 5K; q \geq 10l/min; \Delta p \leq 1bar$
C-H2	Coolant(Out)	ø8	$\Delta \theta \leq 5K; q \geq 10l/min; \Delta p \leq 1bar$
C-H3	Clamp Oil	H1/4"	$p=70\sim77 bar$
C-H4	Air purge	ø8	$p < 1 bar$ (note 1)

RT Specification	
Item	Spec.
Table Diameter(mm)	400
Table Height(mm)	115.5
T-slot Width(mm)	14H8/H11
Bearing I.D.(mm)	200
Torque Motor Type	TMRW7AC
Max. Speed with water cooling(rpm)	115 (380V)
	40 (220V)
Continue Torque with water cooling(Nm)	480
Peak Torque with water cooling(Nm)	910
Continue Current with water cooling(A)	15
Peak Current with water cooling(A)	40.5
Encoder	Renishaw RA23N
Accuracy(arc-sec)	$\pm 5$ (note2)
Repeatability(arc-sec)	4
Clamping Type	Oil
Clamping Torque(Nm)	2000
Net Weight(kg)	$\sim 190$
Load Weight(kg)	500
Controller Support	MITSUBISHI



The labeled area is IP66, any special requirement please contact HIWIN



(note 4)

- Note:
- The clamp air must comply with following quality classes as per ISO 8573-1:2010[4:4:3]
  - The accuracy is compensated.
  - The Thermal protection device\*1, Pressure sensor(PSD-30-PNP)\*1  
Military female connector (MS3106A-20-29S\*1 · MS3106A-20-4S\*1) ·  
Military female connector strain reliefs(MS-3057-12A,20/22\*2) are supplied by HIWIN.
  - This rotary table is only for horizontal installation, must not be used in reverse.

1	Rotary Table	
*	AS01521A	
AS01521A	RCH-400	

mm						
UP	6	120	300	600	1200	OVER 2400
TO	±0.05	±0.1	±0.2	±0.3	±0.4	±0.5