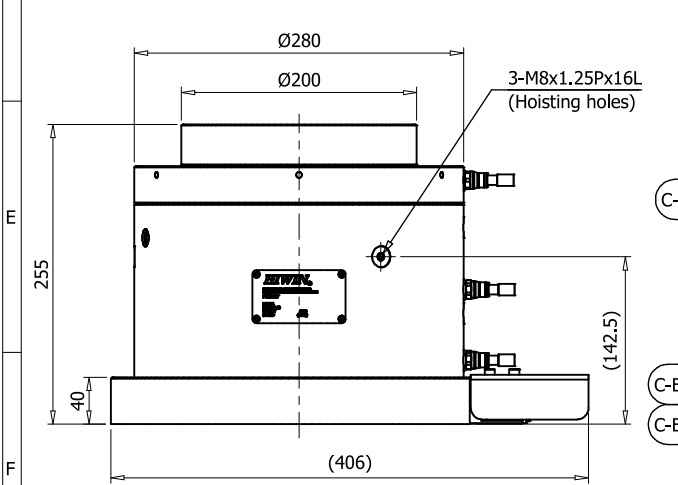
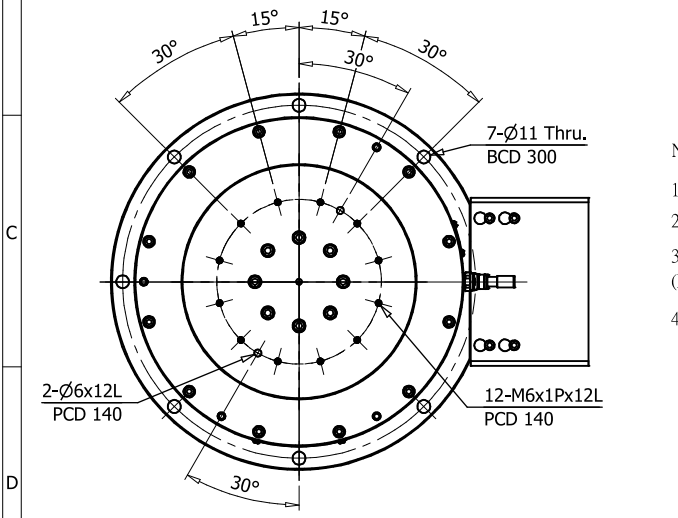


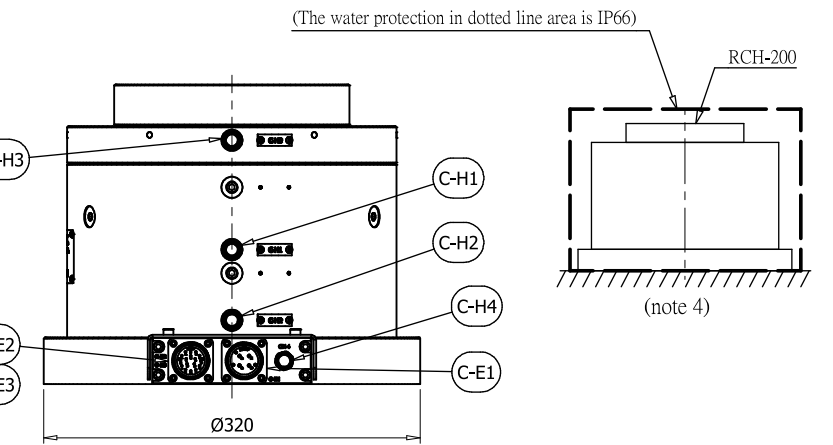
Clamp Circuit		Circuit Specifications-B			RT Specifications	
No.	Item	Spec.	Note	Item	Spec.	
C-E1	Power connector	MS3100A-20-4P	-	Table Diameter(mm)	200	
C-E2	Temperature sensor connector	MS3100A-20-29P	-	Table Height(mm)	255	
C-E3	Encoder Signal connector	MS3100A-20-29P	-	Bearing I,D(mm)	100	
				Torque Motor Type	TMRW47C	
				Continuous power with water cooling(W)	2170	



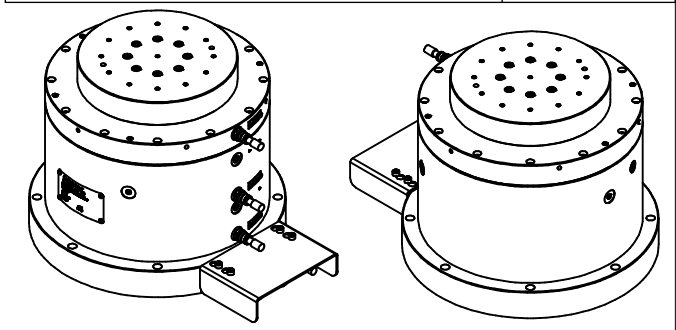
C-H1	Water Cooling(In)	Ø8	$\Delta \theta \leq 5K; q \geq 3.7l/min; \Delta p \leq 1 \text{ bar}$
C-H2	Water Cooling(Out)	Ø8	$\Delta \theta \leq 5K; q \geq 3.7l/min; \Delta p \leq 1 \text{ bar}$
C-H3	Clamp Air	Ø8	$p = 6.3 \pm 0.2 \text{ bar (note 1)}$
C-H4	Internal Pressure Air	Ø8	$p \leq 0.1 \text{ bar (note 1)}$

Note :

- The clamp air and internal pressure air must comply with following quality classes as per ISO 8573-1:2010[4:4:3]
- The accuracy is compensated.
- The thermal protection device\*1, female connectors(MS3106A-20-4S\*1, MS3106A-20-29S\*1), connector tail clips (MS-MS3057-12A, 20/22 use)\*2 are provided by HIWIN.
- This rotary table is only for horizontal installation, and must not be used in reverse.



		Max. Speed with water cooling(rpm)	140
		Continuous Torque with water cooling(Nm)	148
		Peak Torque with water cooling.(Nm)	280
		Continuous Current with water cooling(A)	9
		Peak Current with water cooling.(A)	24.3
	Encoder		Renishaw RA23F
	Accuracy(arc-sec)		$\pm 5 \text{ (note2)}$
	Repeatability(arc-sec)		4
	Clamping Type		Pneumatic
	Clamping Torque(Nm)		600
	Net Weight(kg)		~130
	Load Weight(kg)		100
	Controller Support		FANUC



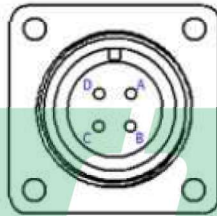
Modification	Section	Description	Date	Check
* * *		Record		

mm						
UP	6	120	300	600	1200	2400
TO	±0.05	±0.1	±0.2	±0.3	±0.4	±0.5
						±0.8

1	Rotary Table		
*	AS01367A		
AS01367A	RCH-200		2022/5/2

HIWIN TECHNOLOGIES

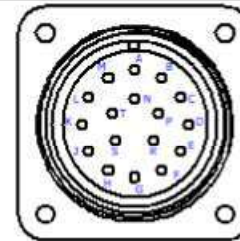
C-E1 for Rotary Axis TM Power Connector



MS3100A-20-4P  
23A, 4P(3.5mm<sup>2</sup>), Male

PIN	Wire Markers	Color / Description
A	U	Black / U/L1
B	V	Black / V/L2
C	W	Black / W/L3
D	PE	Y/G / GND

C-E2/E3 for Rotary Axis TM  
Temperature and Encoder Connector

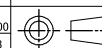


MS3100A-20-29P  
13A, 17P(1.3mm<sup>2</sup>), Male

PIN	Wire Markers	Color/Description
A	PTC+	Blue
B	PTC-	Yellow
C	TEMP-	Brown
D	TEMP+(U)	White
E	TEMP+(V)	Gray
F	TEMP+(W)	Pink
G	SD	Gray
H	SD*	Pink
J	REQ	Violet
K	REQ*	Yellow
L	5V	Brown
M	Spare	Spare
N	0V	White
P	0V	Green
R	Shield	Shield

1	Rotary Table	
*	AS01367A	
AS01367A	RCH-200	2022/5/2

	mm						
UP	6	120	300	600	1200	2400	OVER
TO	±0.05	±0.1	±0.2	±0.3	±0.4	±0.5	±0.8



HIWIN TECHNOLOGIES

A  
2 / 2