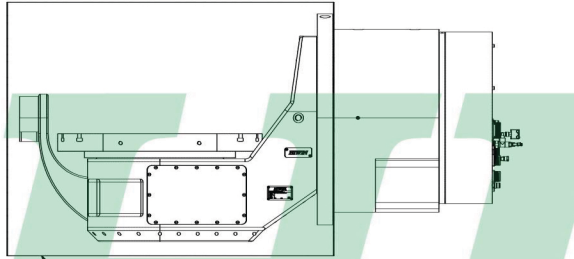
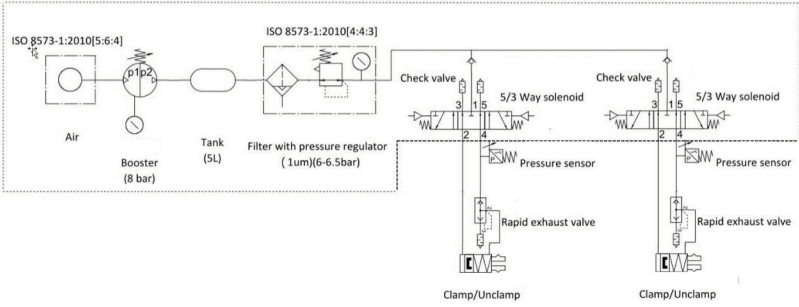


Clamp Circuit

Customers are "recommended" to prepare the component within dotted line.



The labeled area is IP66, any special requirement please contact HIWIN.

Specification-B

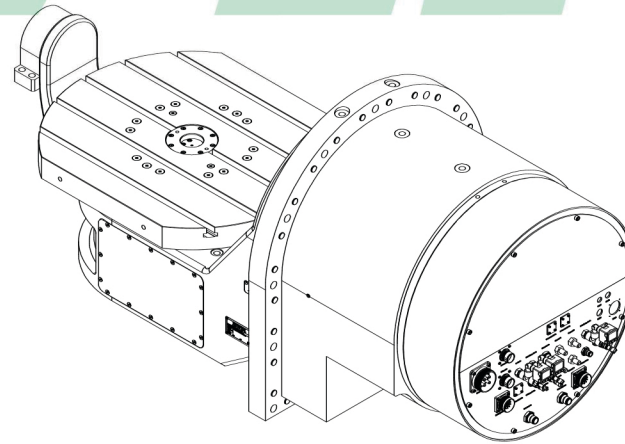
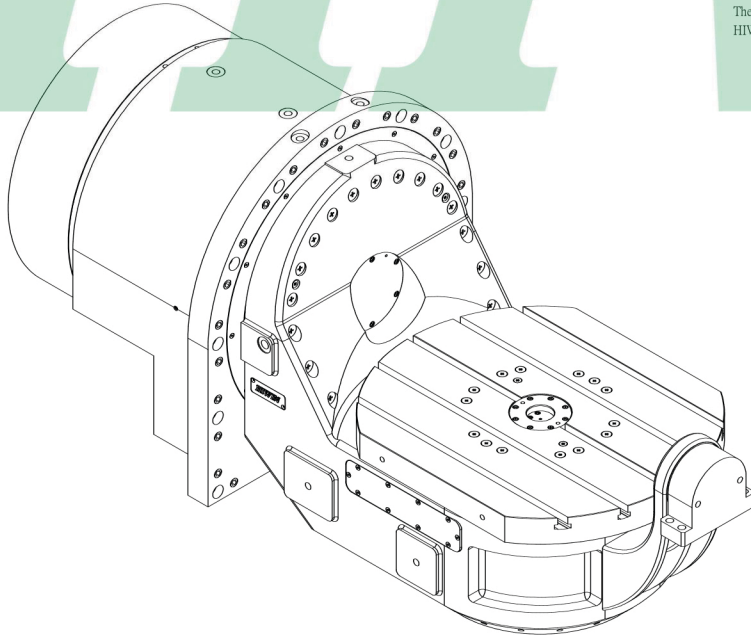
Item	Spec.	Spec.
Table Diameter(mm)	650	-
Center Height(mm)	300	-
Table Height(mm)	250	-
T-slot Width(mm)	14H8/H11	-
Axis	Rotary	Tilting(±120°)
Torque Motor Type	TMRWA7C	TMRWDFC
Bearing I.D(mm)	200	395
Max. Speed(rpm)	100	60
Continuous Torque(Nm)	600	2000
Peak Torque(Nm)	1100	3600
Continuous Current(A)	30	60
Peak Current(A)	81	162
Continuous Power(kW)	6.3	12.6
Cooling Power(kW)	4.1	10
Encoder	RCN2380	RCN2380
Accuracy(arc-sec)	±5 (note2)	±5 (note2)
Repeatability(arc-sec)	4	4
Clamping Type	Pneumatic	Pneumatic
Clamping Torque(Nm)	2400	4200
Net Weight(kg)	~1300	-
Load Weight(kg)	300	-
Controller supported	SIEMENS	-

Interface Specification

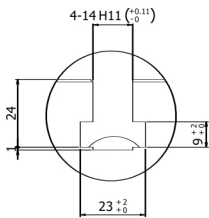
No.	Item	Spec.	Note
B-E1	Power connection	MS3100A-32-17P	-
B-E2	Thermal motor protection	MS3100A-20-29P	-
B-E3	Encoder Signal	M23	-
B-H1	Coolant(In)	ø12	q ≧ 28.6l/min; Δθ ≦ 5K; Δp ≦ 1bar
B-H2	Coolant(Out)	ø12	q ≧ 28.6l/min; Δθ ≦ 5K; Δp ≦ 1bar
B-H3	Clamp Air	ø8	p=6.3±0.2 bar (note 1)
B-H4	UnClamp Air	ø8	p=6.3±0.2 bar (note 1)
C-E1	Power connection	MS3100A-22-22P	-
C-E2	Thermal motor protection	MS3100A-20-29P	-
C-E3	Encoder Signal	M23	-
C-H1	Coolant(In)	ø12	q ≧ 11.7l/min; Δθ ≦ 5K; Δp ≦ 1bar
C-H2	Coolant(Out)	ø12	q ≧ 11.7l/min; Δθ ≦ 5K; Δp ≦ 1bar
C-H3	Clamp Air	ø8	p=6.3±0.2 bar (note 1)
C-H4	UnClamp Air	ø8	p=6.3±0.2 bar (note 1)
C-H5	Internal Pressure Air	ø6	p=0-0.1 bar
C-H11	Hydraulic(In)	H1/4"	0 bar ≦ p ≦ 70 bar
C-H12	Hydraulic(In)	H1/4"	0 bar ≦ p ≦ 70 bar
C-H13	Hydraulic(In)	H1/4"	0 bar ≦ p ≦ 70 bar
C-H14	Hydraulic(In)	H1/4"	0 bar ≦ p ≦ 70 bar
C-HO1	Hydraulic(Out)	ø7xø1.5	O-ring
C-HO2	Hydraulic(Out)	ø7xø1.5	O-ring
C-HO3	Hydraulic(Out)	ø7xø1.5	O-ring
C-HO4	Hydraulic(Out)	ø7xø1.5	O-ring

Note :

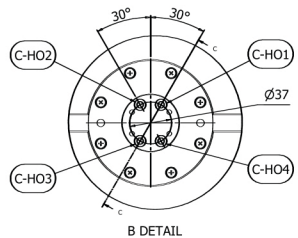
- The clamp air must comply with following quality classes as per ISO 8573-1:2010[4:4:3]
- The accuracy is compensated
- The thermal protection device x2, female connector(MS3108A-32-17S*1 · MS3108A-22-22S*1 · MS3108A-20-29S*2 · MS-MS3057-12A*3 · MS3057-20A*1)are supplied by HIWIN.



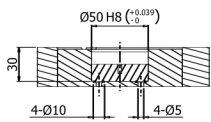
1	Rotary Table
*	AS01512A
AS01512A	RAS-650



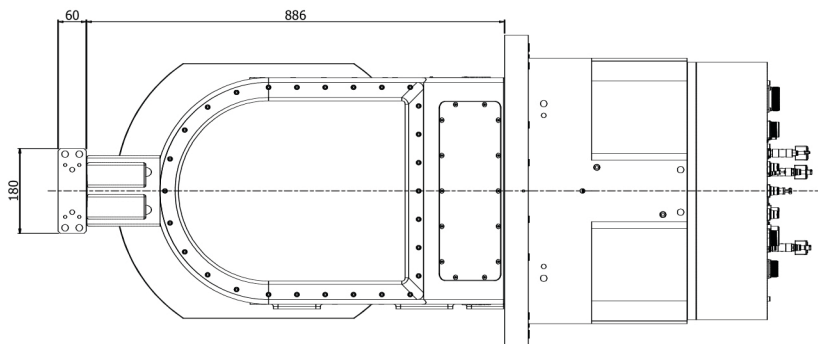
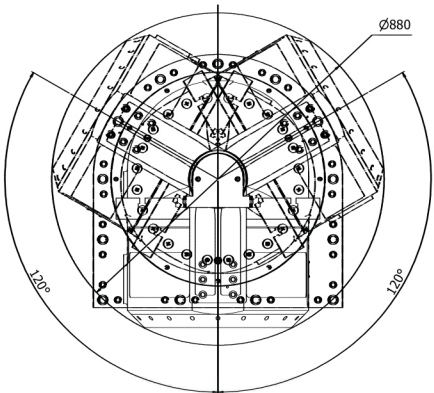
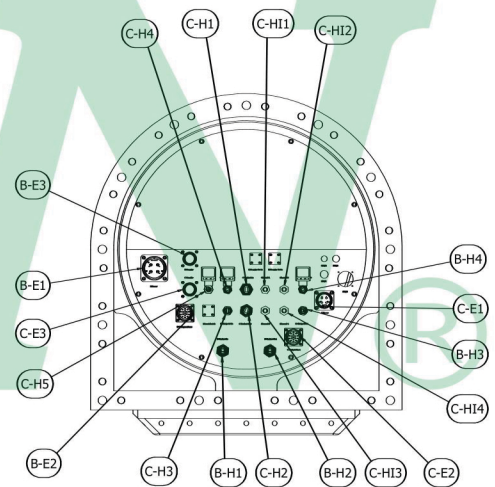
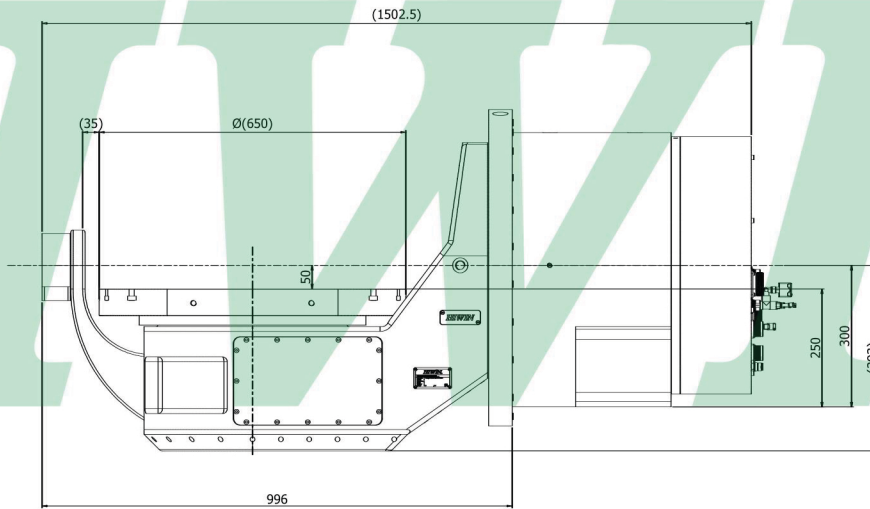
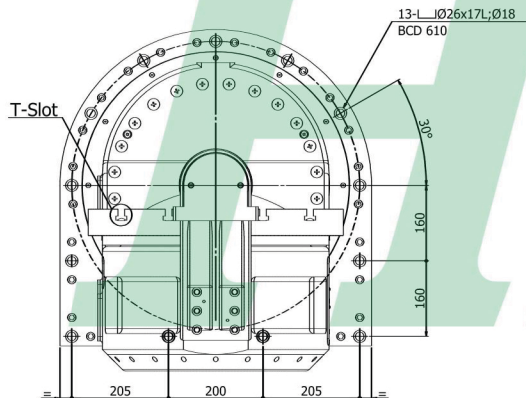
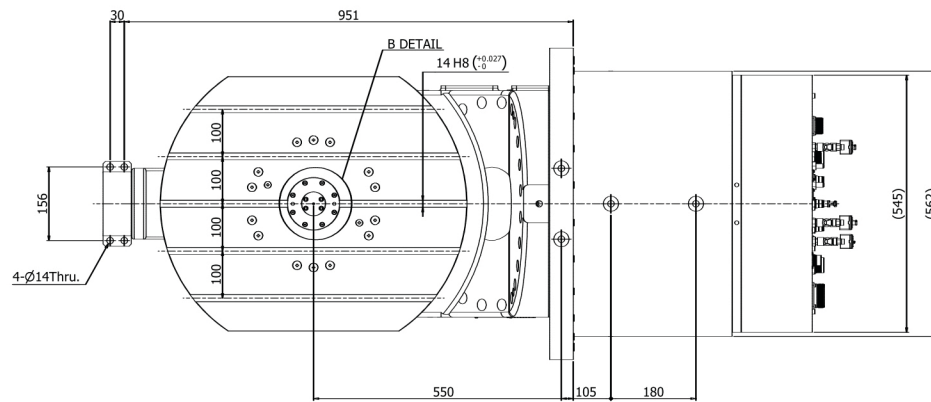
T-Slot



B DETAIL

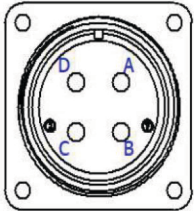


C-C SECTION



1	Rotary Table	
*	AS01512A	
	RAS-650	

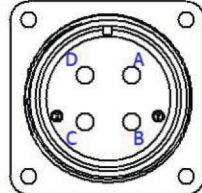
B-E1 for Tilting Axis TM Power Connector



MS3100A-32-17P
80A, 4P(22mm²), Male

PIN	Wire Markers	Color / Description
A	U	Black / U/L1
B	V	Black / V/L2
C	W	Black / W/L3
D	PE	Y/G / GND

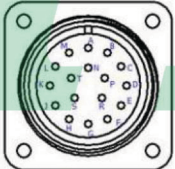
C-E1 for Rotary Axis TM Power Connector



MS3100A-22-22P
46A, 4P(8mm²), Male

PIN	Wire Markers	Color / Description
A	U	Black / U/L1
B	V	Black / V/L2
C	W	Black / W/L3
D	PE	Y/G / GND

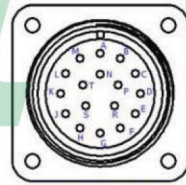
B-E2 for Tilting Axis TM Temperature Connector



MS3100A-20-29P
13A, 17P(1.3mm²), Male

PIN	Wire Markers	Color/Description
A	B_PTC+	Blue
B	B_PTC-	Yellow
C	B_TEMP-	Brown
D	B_TEMP+(U)	White
E	B_TEMP+(V)	Gray
F	B_TEMP+(W)	Pink
G	SHIELD	Y/G

C-E2 for Rotary Axis TM Temperature Connector



MS3100A-20-29P
13A, 17P(1.3mm²), Male

PIN	Wire Markers	Color/Description
A	C_PTC+	Blue
B	C_PTC-	Yellow
C	C_TEMP-	Brown
D	C_TEMP+(U)	White
E	C_TEMP+(V)	Gray
F	C_TEMP+(W)	Pink
G	SHIELD	Y/G

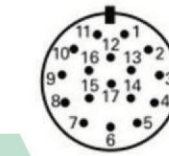
B-E3 for Tilting Axis TM Encoder Connector



M23 coupling (male)
17-pin

PIN	Wire Markers	Color/Description
1	Sensor(Up)	Blue
4	Sensor(0V)	White
7	Up	Brown/Green
8	CLOCK	Violet
9	CLOCK*	Yellow
10	0V	White/Green
11	Shield	Internal shield
12	B+	Blue/Black
13	B-	Red/Black
14	DATA	Gray
15	A+	Green/Black
16	A-	Yellow/Black
17	DATA*	Pink

C-E3 for Rotary Axis TM Encoder Connector



M23 coupling (male)
17-pin

PIN	Wire Markers	Color/Description
1	Sensor(Up)	Blue
4	Sensor(0V)	White
7	Up	Brown/Green
8	CLOCK	Violet
9	CLOCK*	Yellow
10	0V	White/Green
11	Shield	Internal shield
12	B+	Blue/Black
13	B-	Red/Black
14	DATA	Gray
15	A+	Green/Black
16	A-	Yellow/Black
17	DATA*	Pink