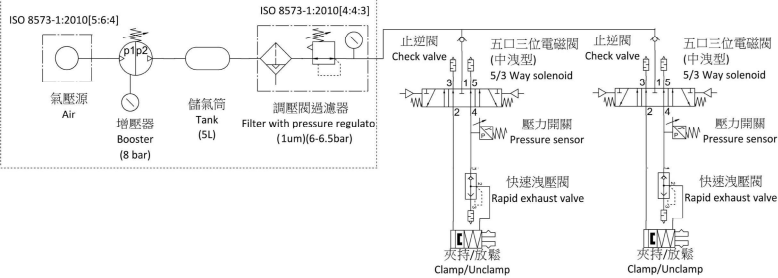


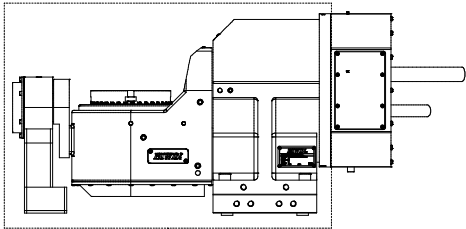
Clamp Circuit

虛線內需請客戶自行配製

Customers are "recommended" to prepare the component within dotted line.

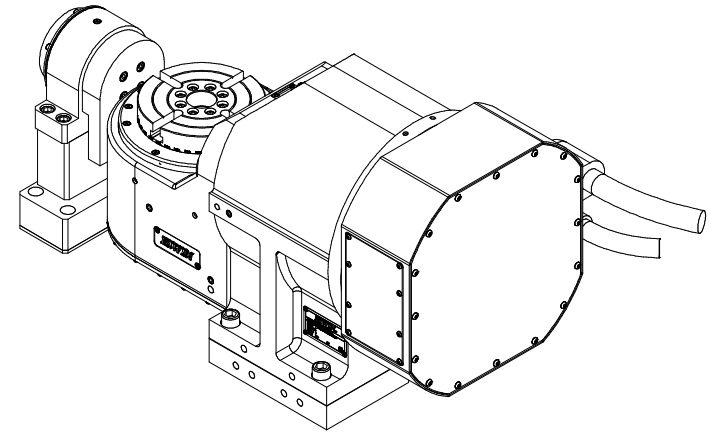
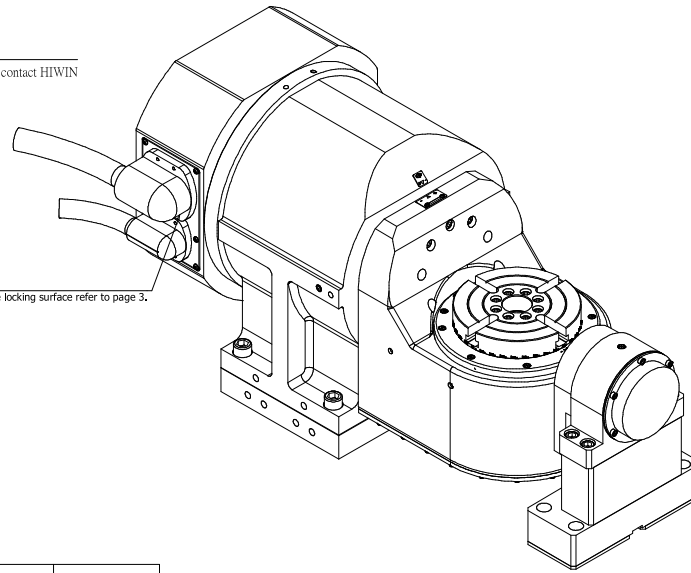


- Note :
- The clamp air must comply with following quality classes as per ISO 8573-1:2010[4:4:3]
 - The accuracy is compensated
 - The Explosion-proof tube(1.7m) x 2 · A/C axis power cable(3m) x 2 · A/C axis signal cable (3m) x 2 · A/C axis encoder cable(3m) x 2 are supplied by HIWIN.
 - One end of the ECA4412 cable is connected to the encoder, and the other end is connected to the SMC40.



The labeled area is IP66, any special requirement please contact HIWIN

The 1.7m protective tube*2 are supplied by HIWIN, the locking surface refer to page 3.



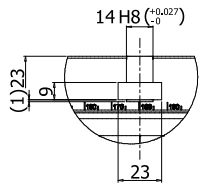
RT Specifications-B

Item	Spec.	Spec.
Table Diameter(mm)	170	-
Center Height(mm)	260	-
Table Height(mm)	260	-
T-slot Width(mm)	14HB	-
Axis Type	Rotary	Tilting(±120°)
Bearing I.D.(mm)	100	100
Torque Motor Type	TMRW23	TMRW4A
Max. Speed with water cooling(rpm)	200	100
Continuous Torque with water cooling(Nm)	35	205
Continuous power with water cooling(W)	733	2146
Peak Torque with water cooling.(Nm)	66.5	390
Continuous Current with water coding(A)	8.3	18
Peak Current with water cooling.(A)	22.3	48.6
Encoder interface	HEIDENHAIN ECA4412	HEIDENHAIN ECA4412
Accuracy(arc-sec)	±5 (note2)	±5 (note2)
Repeatability(arc-sec)	4	4
Clamping Type	Pneumatic	Pneumatic
Clamping Torque(Nm)	342	840
Net Weight(kg)	~250	-
Load Weight(kg)	30	-
Controller supported	SIEMENS	-

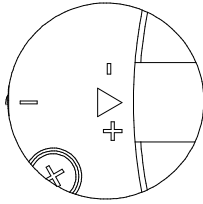
Interface Specifications

No.	Item	Spec.	Note
A-E1	Power connector	-	-
A-E2	Temperature sensor connector	-	-
A-E3	Clamp Signal connector	-	-
A-E4	Encoder Signal connector	D-Sub,15pin	-
A-H1	Water Cooling(In)	ø8	q ≥ 4.8 l/min; Δθ ≤ 5K; p ≤ 1 bar
A-H2	Water Cooling(Out)	ø8	q ≥ 4.8 l/min; Δθ ≤ 5K; p ≤ 1 bar
A-H3	Clamp Air	ø8	p = 6.3 ± 0.2 bar (note 1)
C-E1	Power connector	-	-
C-E2	Temperature sensor connector	-	-
C-E3	Clamp Signal connector	-	-
C-E4	Encoder Signal connector	D-Sub,15pin	-
C-H1	Water Cooling(In)	ø8	q ≥ 1.8 l/min; Δθ ≤ 5K; p ≤ 1 bar
C-H2	Water Cooling(Out)	ø8	q ≥ 1.8 l/min; Δθ ≤ 5K; p ≤ 1 bar
C-H3	Clamp Air	ø8	p = 6.3 ± 0.2 bar (note 1)
C-H11	Pneumatic(In)	ø8	p ≤ 6 bar
C-H12	Pneumatic(In)	ø8	p ≤ 6 bar
C-HO1	Pneumatic(Out)	ø7xø1.5	O-ring
C-HO2	Pneumatic(Out)	ø7xø1.5	O-ring

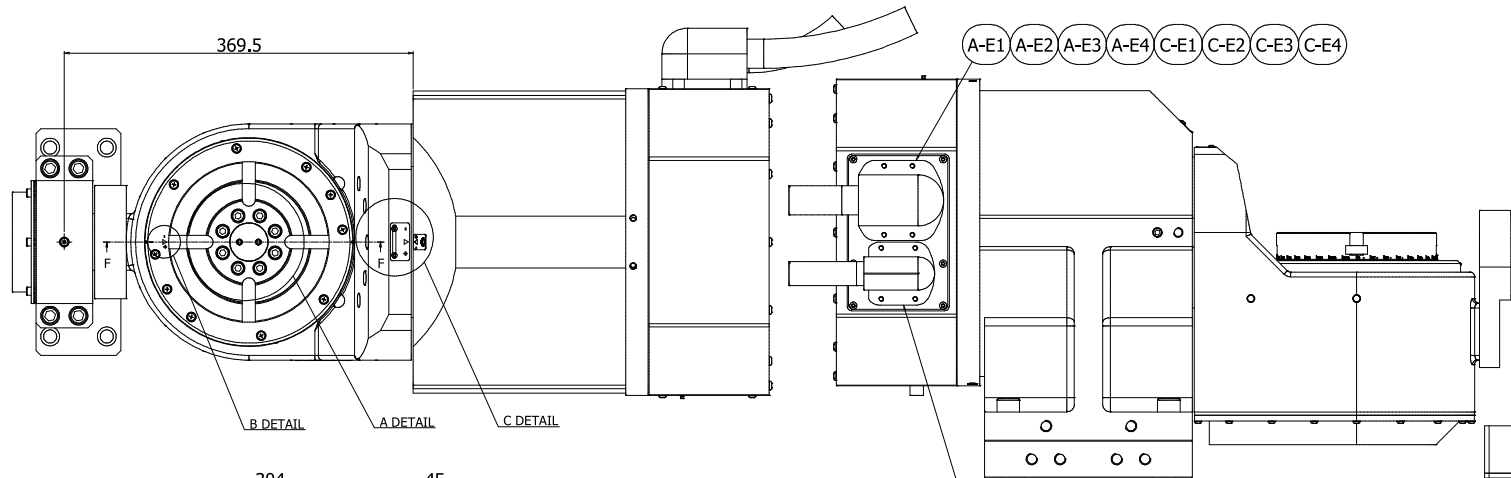
Modification	Section	Description	Date	Confirm
*	*	* Modify record	*	*



D DETAIL

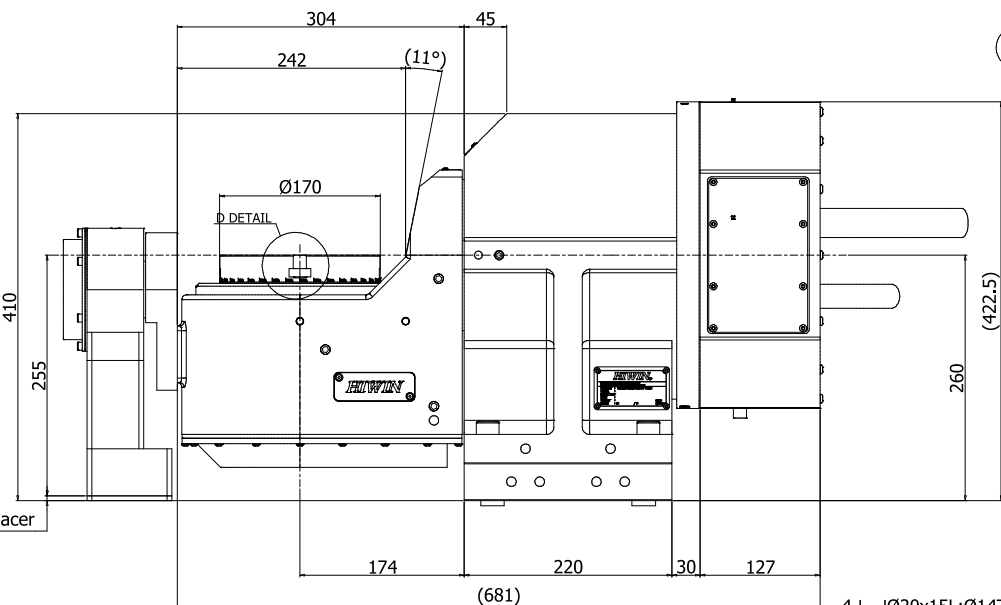
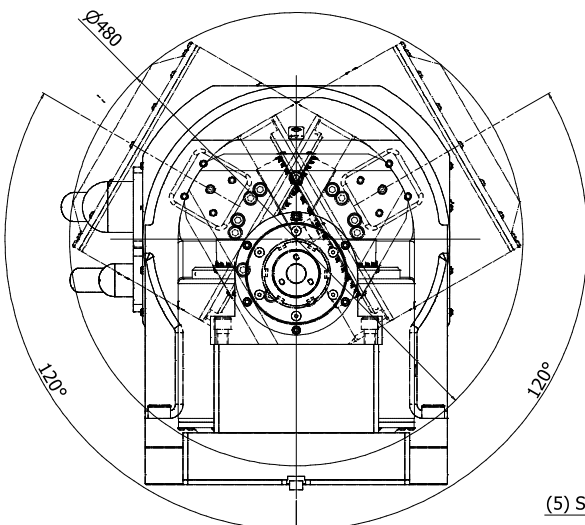


B DETAIL



B DETAIL A DETAIL C DETAIL

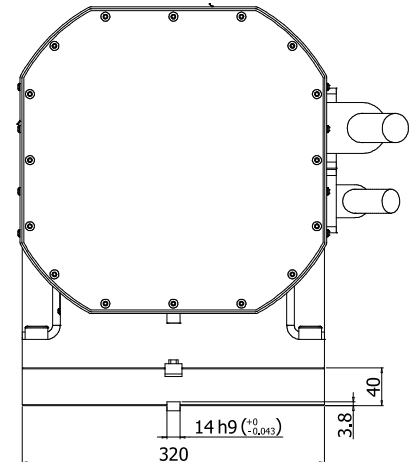
A-E1 A-E2 A-E3 A-E4 C-E1 C-E2 C-E3 C-E4



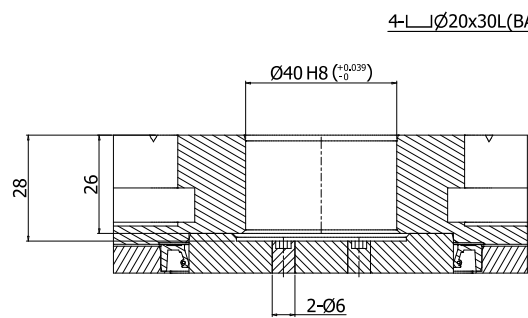
(5) Spacer

A-H1 A-H2 A-H3 C-H1 C-H2 C-H3 C-HI1 C-HI2

E VIEW

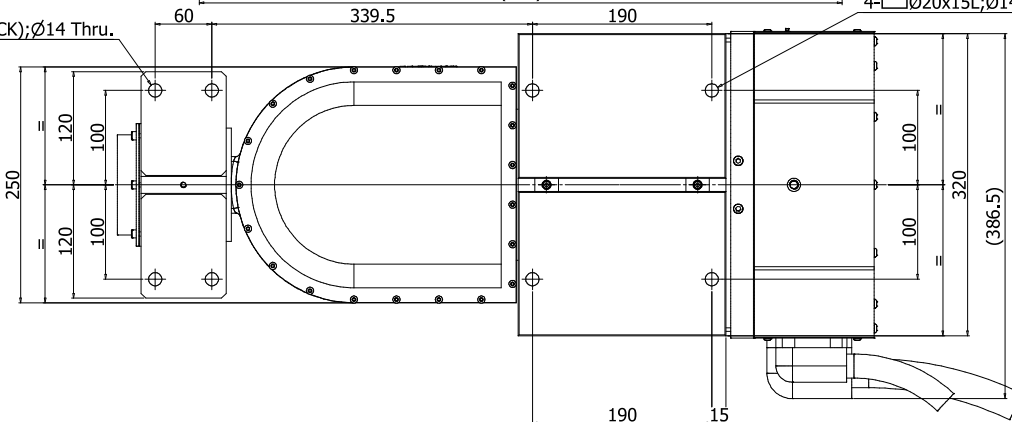


E VIEW



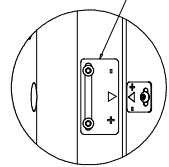
F-F SECTION

4-L Ø20x30L(BACK); Ø14 Thru.

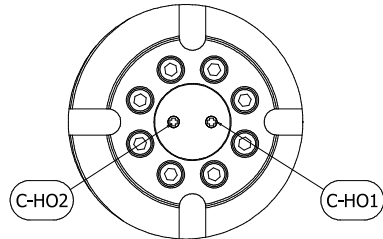


4-L Ø20x15L; Ø14 Thru

Origin position index
(For C axis and A axis position)

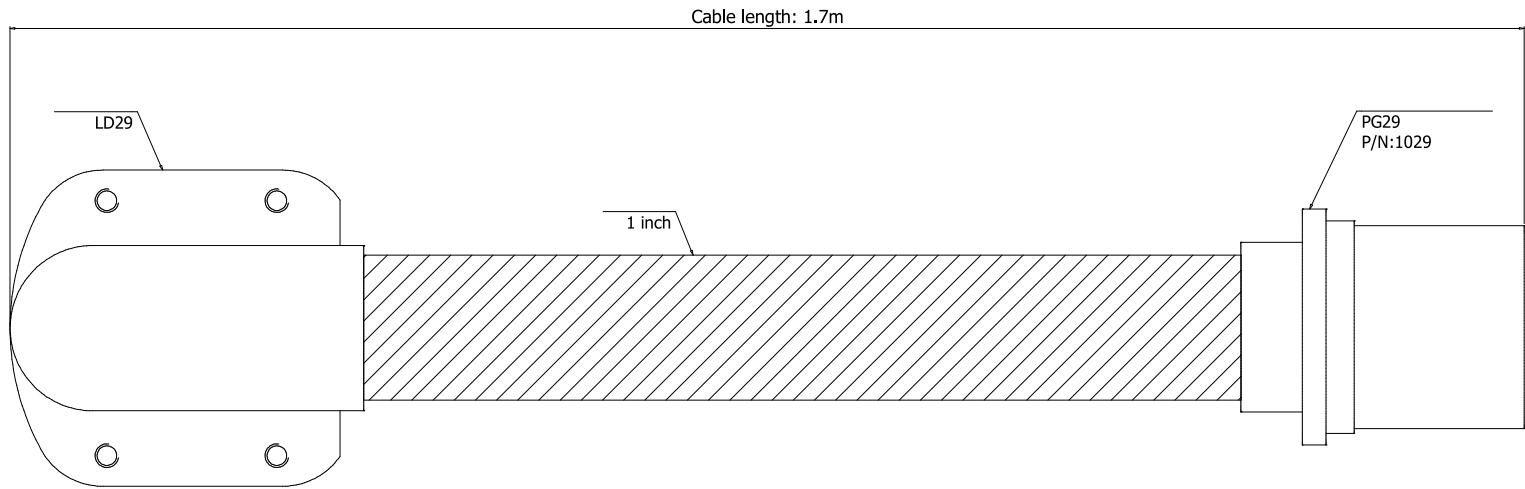
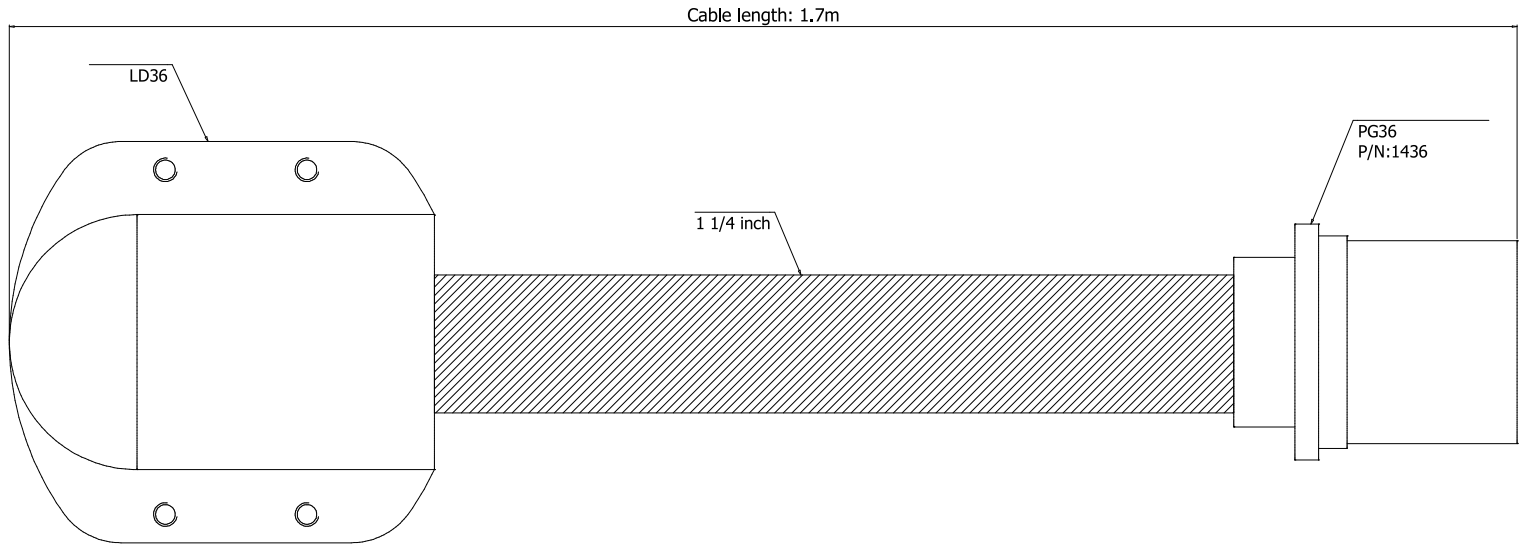


C DETAIL

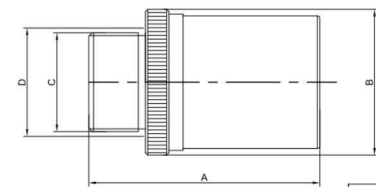


A DETAIL

1	Rotary Table	
*	AS01543A	
AS01543A	RAS-170	2022/4/26



P/N	適用管徑	A	B	C	D
	inch	mm	mm	thread	建議開孔mm
4321	3/4	52	35	PG21	29
1029	1	57	43	PG29	38
1436	1 1/4	60	50	PG36	48



1	Rotary Table	
*	AS01543A	
AS01543A	RAS-170	2022/4/26

