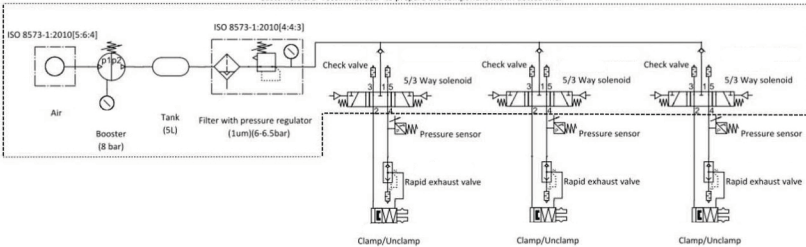
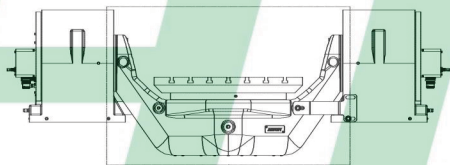


Clamp Circuit

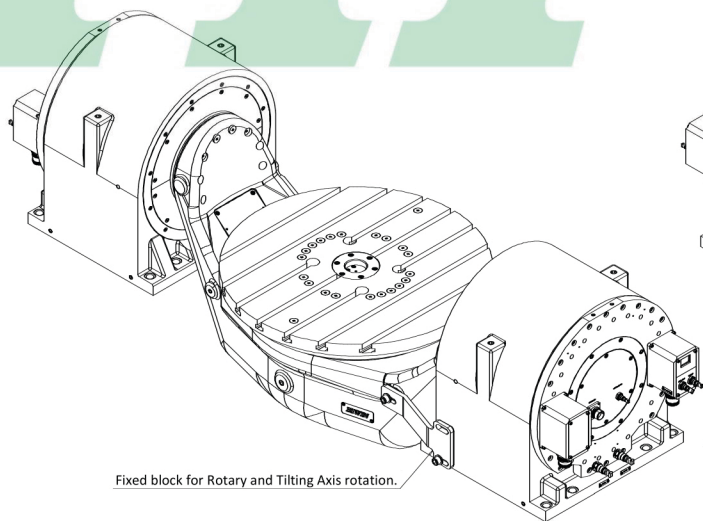
Customers are "recommended" to prepare the component within dotted line.



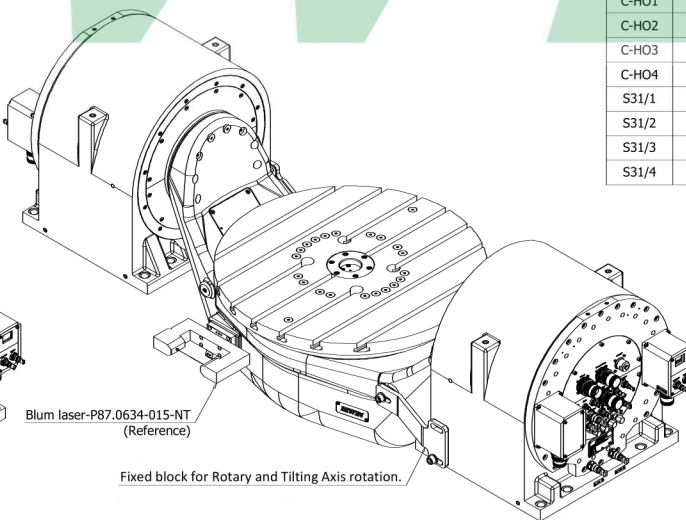
- Note :
- 1.The clamp air must comply with following quality classes as per ISO 8573-1:2010[4:4-3]
 - 2.The encoder air must comply with following quality classes as per ISO 8573-1:2010[1:1:4-1]
 - 3.The accuracy is compensated
 - 4.The drain port needs to be connected to the hydraulic unit(Only if using hydraulic fixture).
 - 5.The female connectors MS3106A-22-22S*3 · MS3106A-20-29S*4 are supplied by HIWIN.



The labeled area is IP66, any special requirement please contact HIWIN.



Fixed block for Rotary and Tilting Axis rotation.



Blum laser-P87.0634-015-NT (Reference)

Fixed block for Rotary and Tilting Axis rotation.

RT Specification

Item	Spec.	Spec.
Table Diameter(mm)	630	-
Center Height(mm)	250	-
Table Height(mm)	150	-
T-slot Width(mm)	14H8	-
Axis Type	Rotary	Tilting(±120°)
Bearing I.D.(mm)	200	200
Torque Motor Type	TMRWA7	TMRWAFCSB
Max. Speed with water cooling(rpm)	100	60
Continuous Torque with water cooling(Nm)	600	1290*2
Peak Torque with water cooling(Nm)	1100	2400*2
Continuous Current with water cooling(A)	30	30*2
Peak Current with water cooling(A)	81	81*2
Continuous power with water cooling(W)	6280	8101*2
Encoder	RCN2380	RCN2380
Accuracy(arc-sec)	±5 (note3)	±5 (note3)
Repeatability(arc-sec)	4	4
Clamping Type	Pneumatic	Pneumatic
Clamping Torque(Nm)	2400	2400*2
Net Weight(kg)	~1190	-
Load Weight(kg)	850	-
Controller supported	SIEMENS	-

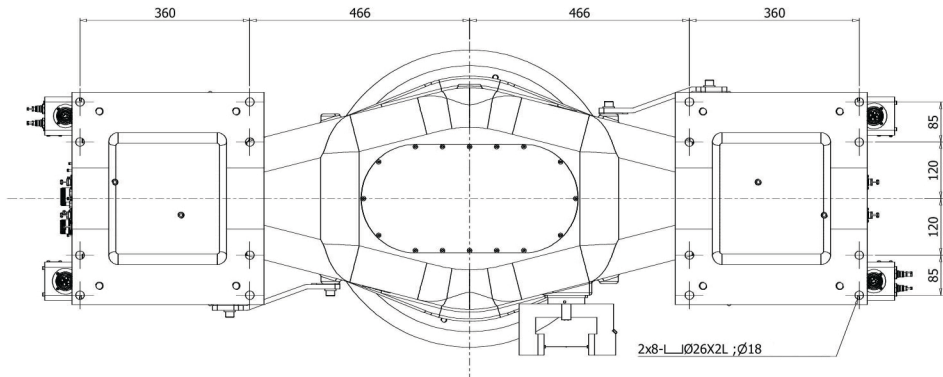
Interface Specification

No.	Item	Spec.	Note
A1-E1	Power connector	MS3100A-22-22P	-
A1-E2	Temperature sensor connector	MS3100A-20-29P	-
A1-E3	Clamp Signal	MS3100A-20-29P	-
A1-E4	Encoder Signal connector	M23	12x0.19mm [^] 2
A1-H1	Coolant(In)	ø12	q _≥ 22l/min; Δθ _≤ 5K; Δp _≤ 3 bar
A1-H2	Coolant(Out)	ø12	q _≥ 22l/min; Δθ _≤ 5K; Δp _≤ 3 bar
A1-H3	Clamp Air	ø8	p=6.3±0.2 bar (note 1)
A1-H4	UnClamp Air	ø8	p=6.3±0.2 bar (note 1)
A2-E1	Power connector	MS3100A-22-22P	-
A2-E2	Temperature sensor connector	MS3100A-20-29P	-
A2-E3	Clamp Signal	MS3100A-20-29P	-
A2-H1	Coolant(In)	ø12	q _≥ 22l/min; Δθ _≤ 5K; Δp _≤ 3 bar
A2-H2	Coolant(Out)	ø12	q _≥ 22l/min; Δθ _≤ 5K; Δp _≤ 3 bar
A2-H3	Clamp Air	ø8	p=6.3±0.2 bar (note 1)
A2-H4	UnClamp Air	ø8	p=6.3±0.2 bar (note 1)
C-E1	Power connector	MS3100A-22-22P	-
C-E2	Temperature sensor connector	MS3100A-20-29P	-
C-E3	Clamp Signal	MS3100A-20-29P	-
C-E4	Encoder Signal connector	M23	12x0.19mm [^] 2
C-H1	Coolant(In)	ø12	q _≥ 11.7l/min; Δθ _≤ 5K; Δp _≤ 1 bar
C-H2	Coolant(Out)	ø12	q _≥ 11.7l/min; Δθ _≤ 5K; Δp _≤ 1 bar
C-H3	Clamp Air	ø8	p=6.3±0.2 bar (note 1)
C-H4	UnClamp Air	ø8	p=6.3±0.2 bar (note 1)
C-H5	Internal Air Pressure	ø6	p=0.5 bar
C-H6	Drain Port	ø8	note 4
C-H11	Hydraulic(In)	H1/4"	p=70 bar
C-H12	Hydraulic(In)	H1/4"	p=70 bar
C-H13	Hydraulic(In)	H1/4"	p=70 bar
C-H14	Hydraulic(In)	H1/4"	p=70 bar
C-H01	Hydraulic(Out)	ø7.65xø1.78	O-ring
C-H02	Hydraulic(Out)	ø7.65xø1.78	O-ring
C-H03	Hydraulic(Out)	ø7.65xø1.78	O-ring
C-H04	Hydraulic(Out)	ø7.65xø1.78	O-ring
S31/1	Tool Cleaner	ø8	-
S31/2	Shutter Piston	ø4	-
S31/3	Barrier Air	ø6	-
S31/4	Plug Connection	MS3100A-20-29P	-

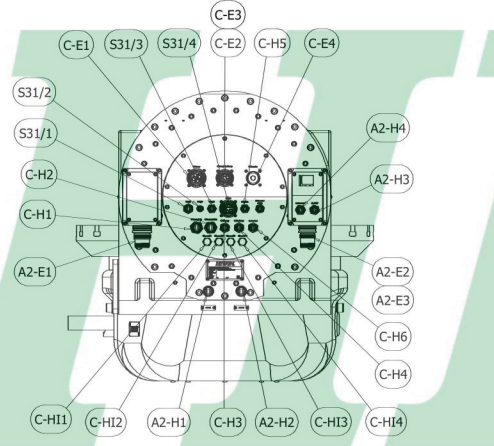
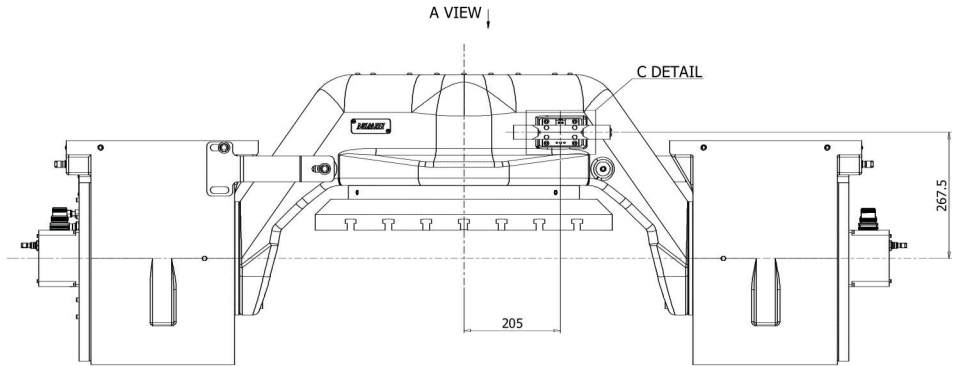
* Modification	* Section	* Description	* Date	* Check
----------------	-----------	---------------	--------	---------

Modify record

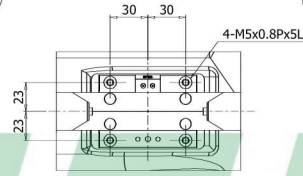
1	ROTARY TABLE	MANT
*	ASD1536A	
	RAB-630	



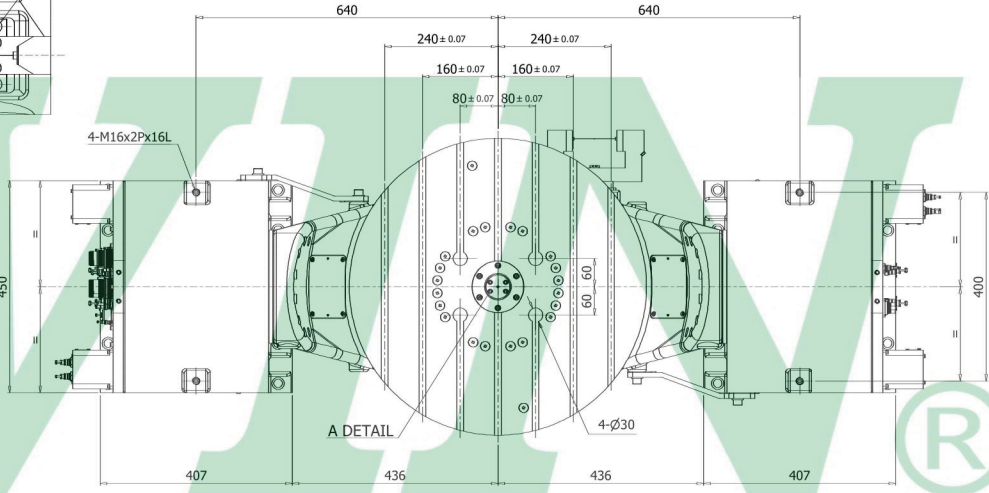
A VIEW



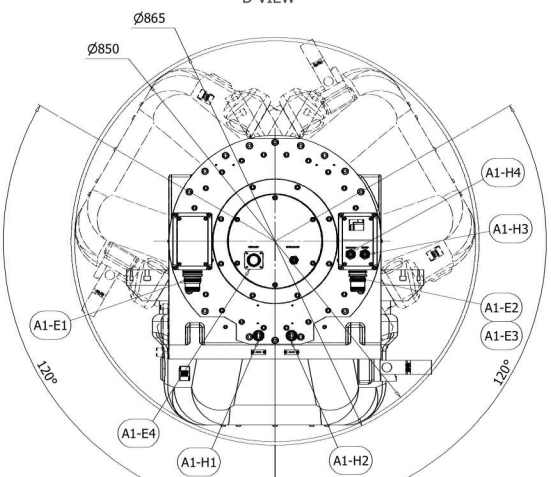
D VIEW



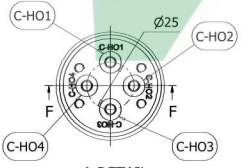
C DETAIL



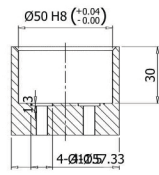
A DETAIL



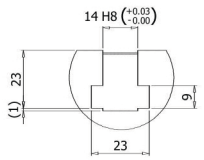
E VIEW



A DETAIL

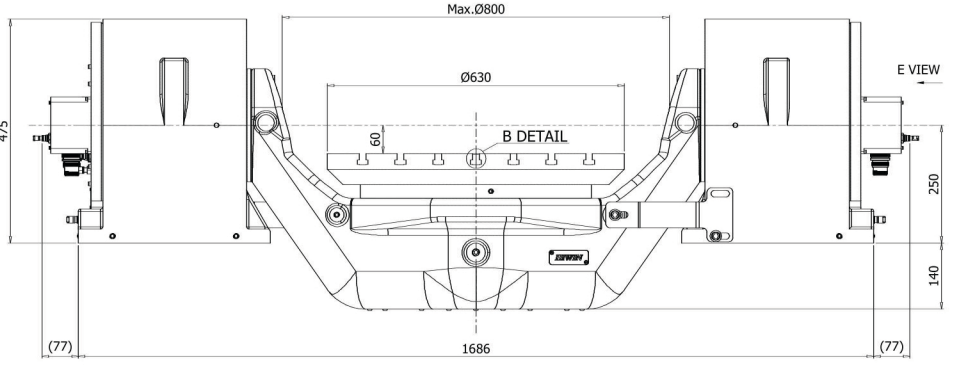


F-F SECTION



B DETAIL

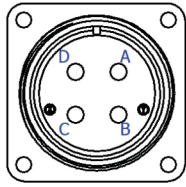
D VIEW



E VIEW

I		ROTARY TABLE	MANT																								
*		ASD1536A																									
		RAB-630																									
<table border="1"> <tr> <td></td> <td>mm</td> <td></td> <td></td> <td></td> <td></td> <td></td> <td></td> </tr> <tr> <td>10</td> <td>0</td> <td>12</td> <td>15</td> <td>20</td> <td>30</td> <td>40</td> <td>50</td> </tr> <tr> <td>+0.05</td> <td>+0.1</td> <td>+0.2</td> <td>+0.3</td> <td>+0.4</td> <td>+0.5</td> <td>+0.6</td> <td>+0.8</td> </tr> </table>					mm							10	0	12	15	20	30	40	50	+0.05	+0.1	+0.2	+0.3	+0.4	+0.5	+0.6	+0.8
	mm																										
10	0	12	15	20	30	40	50																				
+0.05	+0.1	+0.2	+0.3	+0.4	+0.5	+0.6	+0.8																				
				A																							

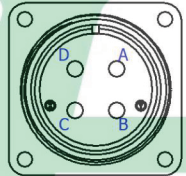
A1-E1 for Tilting Axis TM Power Connector



MS3100A-22-22P
46A, 4P(8mm²), Male

PIN	Wire Markers	Color / Description
A	U	Black / U/L1
B	V	Black / V/L2
C	W	Black / W/L3
D	PE	Y/G / GND

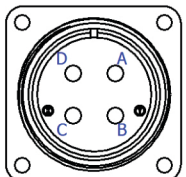
A2-E1 for Tilting Axis TM Power Connector



MS3100A-22-22P
46A, 4P(8mm²), Male

PIN	Wire Markers	Color / Description
A	U	Black / U/L1
B	V	Black / V/L2
C	W	Black / W/L3
D	PE	Y/G / GND

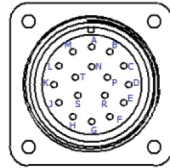
C-E1 for Rotary Axis TM Power Connector



MS3100A-22-22P
46A, 4P(8mm²), Male

PIN	Wire Markers	Color / Description
A	U	Black / U/L1
B	V	Black / V/L2
C	W	Black / W/L3
D	PE	Y/G / GND

A1-E2/E3 for Tilting Axis TM Temperature and Pressure Sensor Connector



MS3100A-20-29P
13A, 17P(1.3mm²), Male

PIN	Wire Markers	Color/Description
A	PTC+	Blue
B	PTC-	Yellow
C	TEMP-	Brown
D	TEMP+(U)	White
E	TEMP+(V)	Gray
F	TEMP+(W)	Pink
G	DC 24V	Brown
H	DC 0V	Blue
J	A1_CI	White
K	A1_UI	Black
R	Shield	Shield

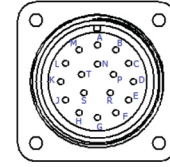
A1-E4 for Tilting Axis TM Encoder Connector



M23 coupling (male)
17-pin

PIN	Wire Markers	Color/Description
1	Sensor(Up)	Blue
4	Sensor(0V)	White
7	Up	Brown/Green
8	CLOCK	Violet
9	CLOCK*	Yellow
10	0V	White/Green
11	Shield	Internal shield
12	B+	Blue/Black
13	B-	Red/Black
14	DATA	Gray
15	A+	Green/Black
16	A-	Yellow/Black
17	DATA*	Pink

A2-E2/E3 for Tilting Axis TM Temperature and Pressure Sensor Connector



MS3100A-20-29P
13A, 17P(1.3mm²), Male

PIN	Wire Markers	Color/Description
A	PTC+	Blue
B	PTC-	Yellow
C	TEMP-	Brown
D	TEMP+(U)	White
E	TEMP+(V)	Gray
F	TEMP+(W)	Pink
G	DC 24V	Brown
H	DC 0V	Blue
J	A2_CI	White
K	A2_UI	Black
R	Shield	Shield

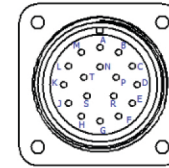
C-E4 for Rotary Axis TM Encoder Connector



M23 coupling (male)
17-pin

PIN	Wire Markers	Color/Description
1	Sensor(Up)	Blue
4	Sensor(0V)	White
7	Up	Brown/Green
8	CLOCK	Violet
9	CLOCK*	Yellow
10	0V	White/Green
11	Shield	Internal shield
12	B+	Blue/Black
13	B-	Red/Black
14	DATA	Gray
15	A+	Green/Black
16	A-	Yellow/Black
17	DATA*	Pink

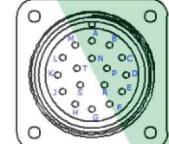
C-E2/E3 for Rotary Axis TM Temperature and Pressure Sensor Connector



MS3100A-20-29P
13A, 17P(1.3mm²), Male

PIN	Wire Markers	Color/Description
A	PTC+	Blue
B	PTC-	Yellow
C	TEMP-	Brown
D	TEMP+(U)	White
E	TEMP+(V)	Gray
F	TEMP+(W)	Pink
G	DC 24V	Brown
H	DC 0V	Blue
J	C_CI	White
K	C_UI	Black
R	Shield	Shield

S31/4 for Rotary Axis Plug Connector



MS3100A-20-29P
13A, 17P(1.3mm²), Male

PIN	Wire Markers	Color/Description
A	1	White
B	2	Brown
C	3	Green
D	4	Yellow
E	5	Gray
F	6	Pink
G	7	Blue
H	8	Red
J	9	Black
K	10	Violet
L	11	Gray/Pink
M	12	Red/Blue
N	Shield	Y/G