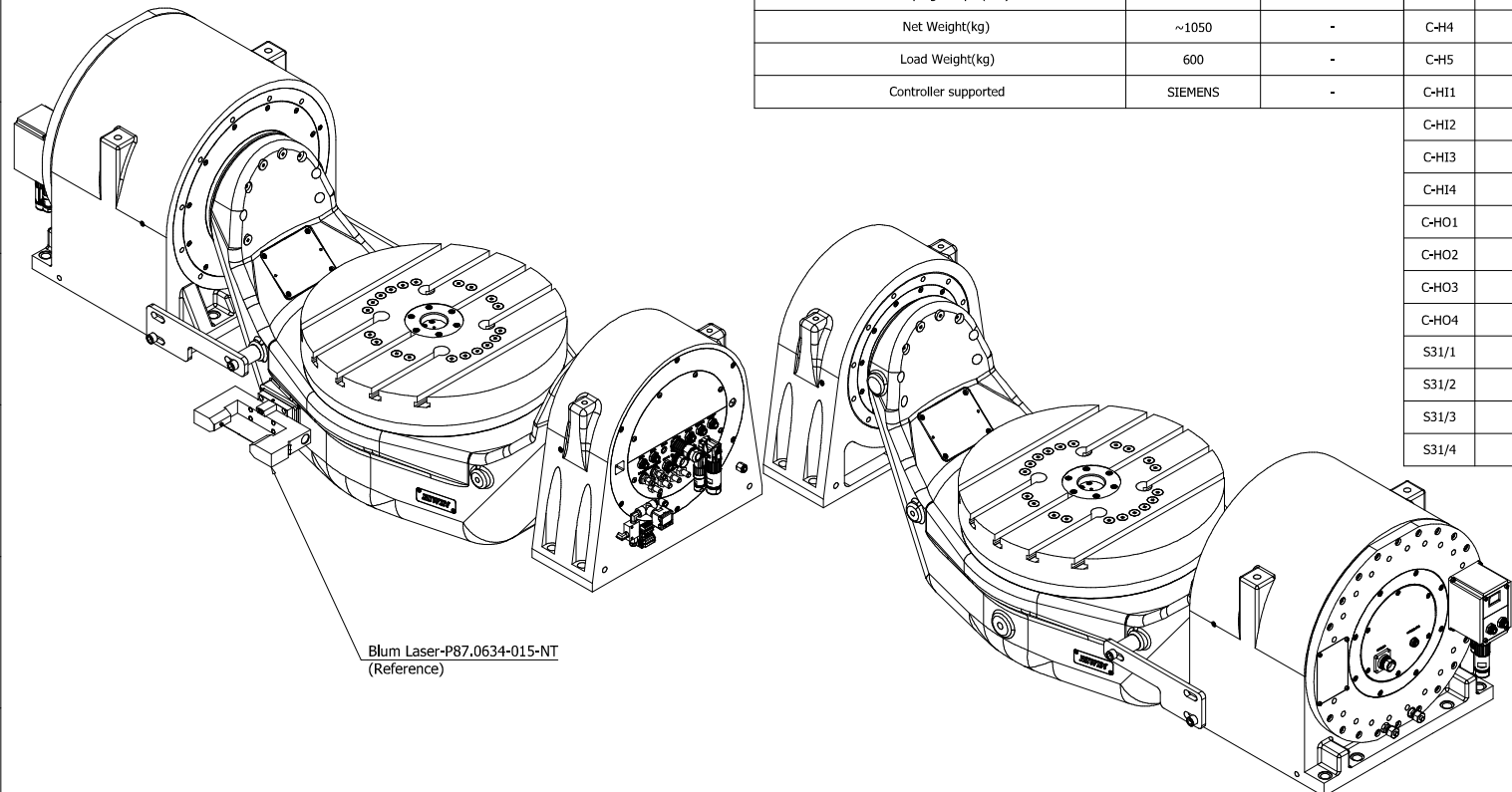
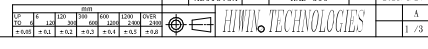


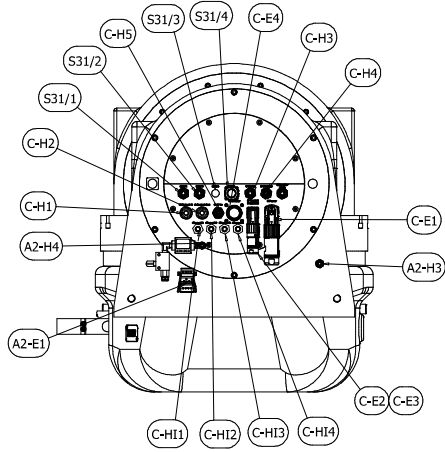
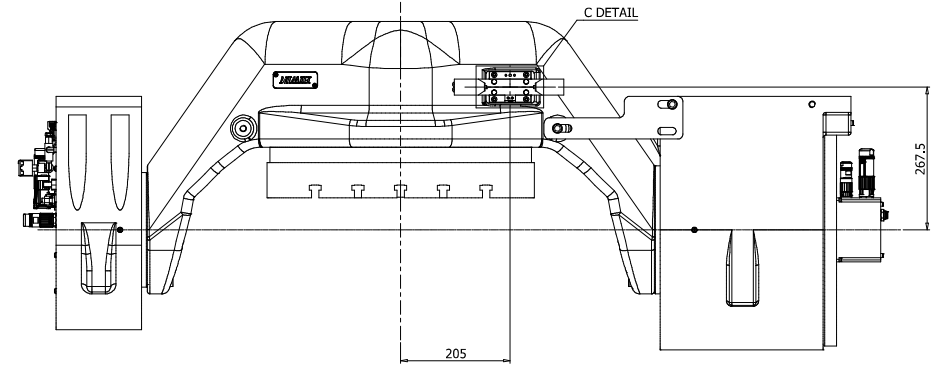
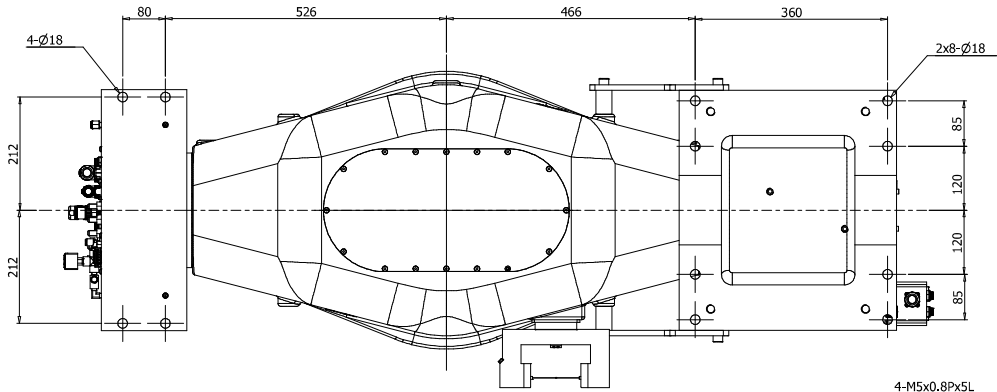
- Note:
- The clamp air must comply with following quality classes as per ISO 8573-1:2010[4:4:3]
 - The accuracy is compensated



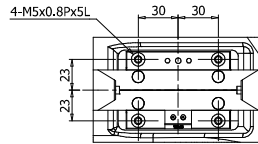
RT Specifications-B			Interface Specifications			
Item	Spec.	Spec.	No.	Item	Spec.	Note
Table Diameter(mm)	500	-	A1-E1	Power connector	-	-
Center Height(mm)	250	-	A1-E2	Temperature sensor connector	-	-
Table Height(mm)	190	-	A1-E3	Clamp Signal connector	-	-
T-slot Width(mm)	14H8	-	A1-E4	Encoder Signal connector	M23	-
Axis Type	Rotary	Tilting(±120°)	A1-H1	Water Cooling(In)	ø12	q≥22 l/min; Δθ≤5K; Δp≤3 bar
Bearing I.D.(mm)	200	200	A1-H2	Water Cooling(Out)	ø12	q≥22 l/min; Δθ≤5K; Δp≤3 bar
Torque Motor Type	TMRWA7C	TMRWAF-C-SB	A1-H3	Clamp Air	ø8	p=6.3±0.2 bar (note 1)
Max. Speed with water cooling(rpm)	100	60	A1-H4	UnClamp Air	ø8	p=6.3±0.2 bar (note 1)
Continuous Torque with water cooling(Nm)	600	1290	A2-E1	Clamp Signal connector	231-604/019-000	-
Continuous power with water cooling(kW)	6.3	8.1	A2-H3	Clamp Air	ø8	p=6.3±0.2 bar (note 1)
Peak Torque with water cooling.(Nm)	1100	2400	A2-H4	UnClamp Air	ø8	p=6.3±0.2 bar (note 1)
Continuous Current with water cooling(A)	30	30	C-E1	Power connector	-	-
Peak Current with water cooling.(A)	81	81	C-E2	Temperature sensor connector	-	-
Encoder interface	RCN2380	RCN2380	C-E3	Clamp Signal connector	-	-
Accuracy(arc-sec)	±5 (note2)	±5 (note2)	C-E4	Encoder Signal connector	M23	-
Repeatability(arc-sec)	4	4	C-H1	Water Cooling(In)	ø12	q≥11.7 l/min; Δθ≤5K; Δp≤1 bar
Clamping Type	Pneumatic	Pneumatic	C-H2	Water Cooling(Out)	ø12	q≥11.7 l/min; Δθ≤5K; Δp≤1 bar
Clamping Torque(Nm)	2400	2400*2	C-H3	Clamp Air	ø8	p=6.3±0.2 bar (note 1)
Net Weight(kg)	~1050	-	C-H4	UnClamp Air	ø8	p=6.3±0.2 bar (note 1)
Load Weight(kg)	600	-	C-H5	Internal Pressure Air	ø6	P≤0.1 bar
Controller supported	SIEMENS	-	C-HI1	Hydraulic(In)	H1/4"	P≤70 bar
			C-HI2	Hydraulic(In)	H1/4"	P≤70 bar
			C-HI3	Hydraulic(In)	H1/4"	P≤70 bar
			C-HI4	Hydraulic(In)	H1/4"	P≤70 bar
			C-HO1	Hydraulic(Out)	ø6xø1.78	O-ring
			C-HO2	Hydraulic(Out)	ø6xø1.78	O-ring
			C-HO3	Hydraulic(Out)	ø6xø1.78	O-ring
			C-HO4	Hydraulic(Out)	ø6xø1.78	O-ring
			S31/1	Tool Cleaner	ø8	-
			S31/2	Shutter Piston	ø4	-
			S31/3	Barrier Air	ø6	-
			S31/4	Plug Connection	-	-

Modification	Section	Description	Date	Confirm
*	*	*	*	*

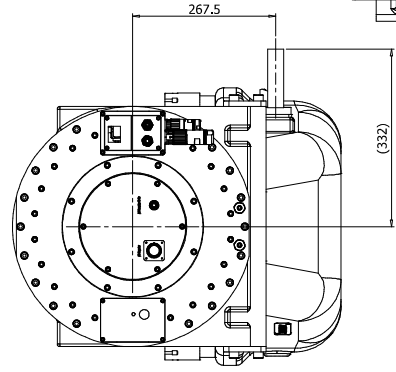




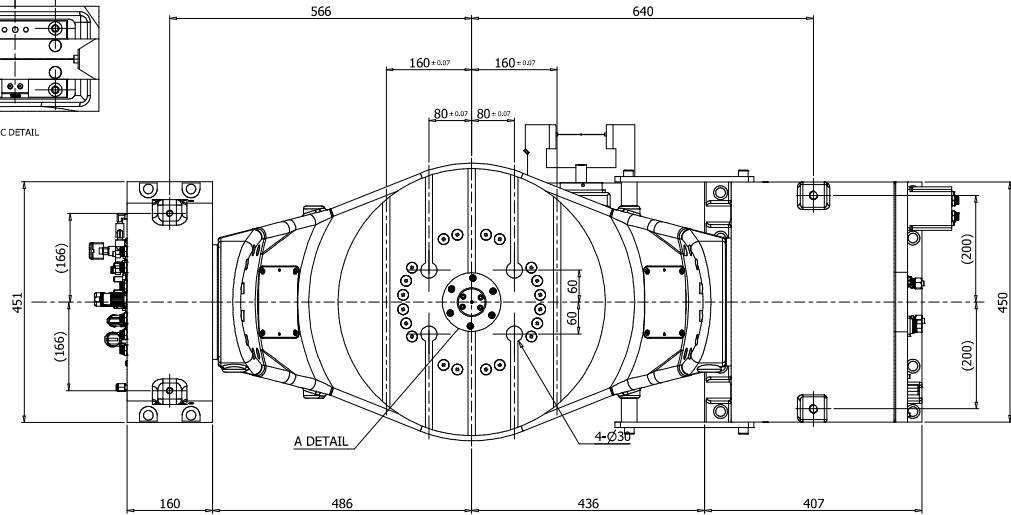
D VIEW



C DETAIL

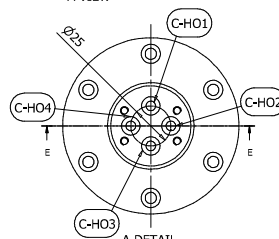
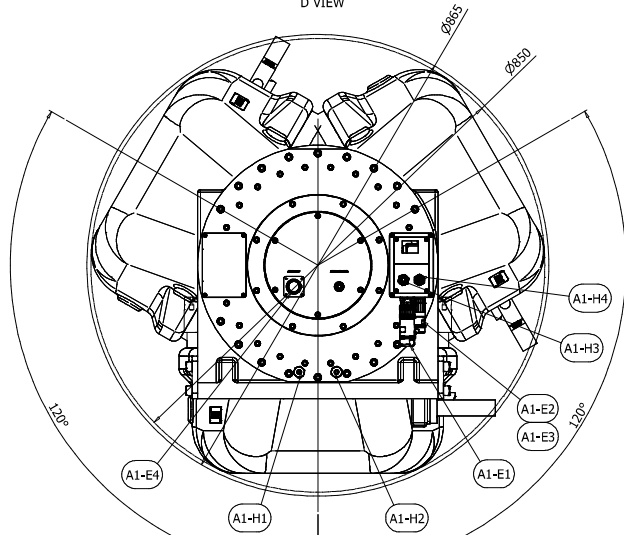


A VIEW

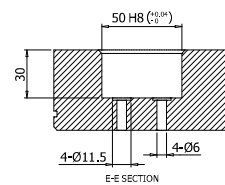


A DETAIL

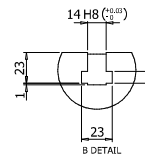
A VIEW



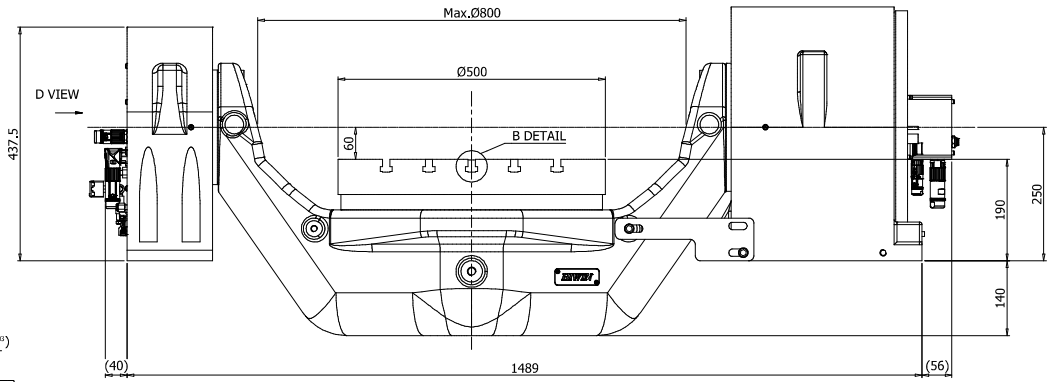
A DETAIL



E-E SECTION



B DETAIL



D VIEW

B DETAIL

1	Rotary table	MAN1
*	AS01375A	
AS01375A	RAB-500	2021/4/27

mm						
Ø	h	BS	BS	BS	BS	BS
±0.01	±0.02	±0.03	±0.04	±0.05	±0.06	±0.07
±0.01	±0.02	±0.03	±0.04	±0.05	±0.06	±0.07